



Office of the County Recorder
St. Louis County, Minnesota
Recorded on 11/29/2022
at 1:57 PM

Document No. 01457326

Wendy Levitt
County Recorder

By A Johnson Deputy
AFR 20221128005

Auditor

Recording Fee: \$0.00
Well Certificate Fee: \$0.00

This page has been added by the St. Louis County Recorder/Registrar of Titles to add the recording information to the attached document.

Notes:

**CERTIFICATE OF LOCATION
OF GOVERNMENT CORNER**

Southeast Corner of Section 33
Township 57 N, Range 21 W, 4th P.M.
STATE OF MINNESOTA, COUNTY OF ST. LOUIS.

Office of the County Recorder
St. Louis County, Minnesota

Recorded on NOV 29 2022
at 1:57 p m
Document No. 1457326

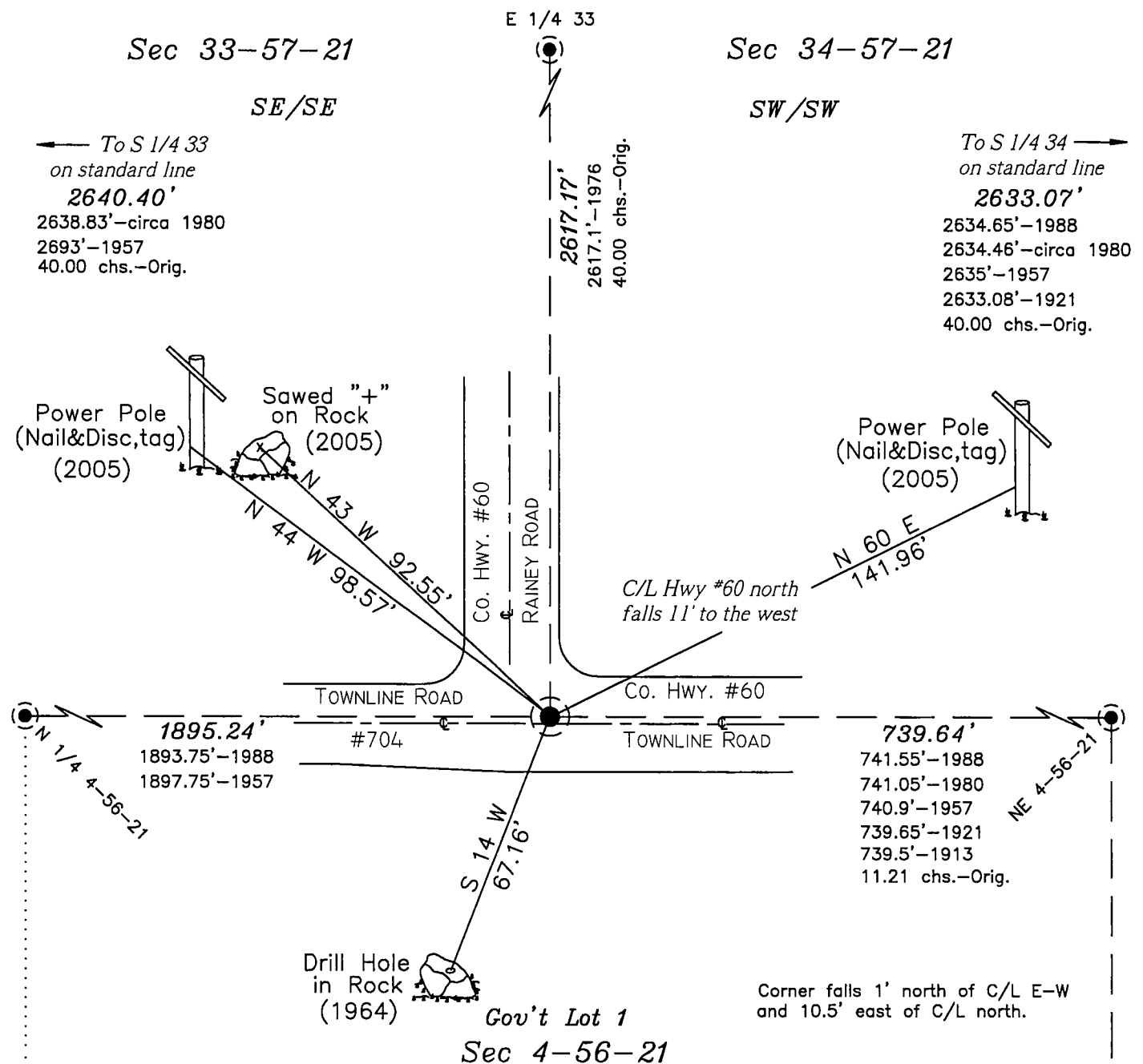
Wendy Levitt
County Recorder

I hereby certify that the within instrument
was filed in this office for record

by A. Johnson Deputy

(reserved for recording data)

GPS I.D.: 3841 Co. Proj. No.: 348247

**"SKETCH OF REFERENCE TIES"**

(not to scale - bearings are magnetic)

Ties are measured to center of monument unless otherwise noted.



NAD 83 (1996 adjustment)

Latitude (N): 47°22'17.32165"

Longitude (W): 93°00'15.74828"

SLCTM 96 Northing: 3556639.363
Easting: 4619832.486

I hereby certify that this survey, plan, or report was prepared by me or under my direct supervision and that I am a duly Licensed Land Surveyor under the laws of the state of Minnesota. I further certify that this certificate of location of government corner is correct and complete to the best of my knowledge and belief.

Preston Dowell
signature

Name: Preston Dowell

11/22/22
date

License No. 44976

☐ County Surveyor

☒ Deputy County Surveyor

☐ Professional Land Surveyor

Statement of Evidence**Southeast Corner Section 33 T57N, R21W**

August, 1867 The original survey of the 7th Correction Line was run west on the south line of Section 34 and at 40.00 chains set 1/4 corner... at 80.00 chains set corner to sections 33 & 34 with ties:

10" White Pine	N 48 W	18 links (11.9')
9" Birch	N 51 E	41 links (27.1')

George R. Stuntz, U.S. Deputy Surveyor

March 5, 1913 Rainey Road Stuntz Township Road Order: Beginning at the section corner between Sections 33 & 34, T57N, R21W, thence north between Sections 33 & 34 and 27 & 28...

July 25, 1913 Field Book #6, page 5, indicates an Iron Pin for the corner 61.3' from the GN RR track and ties:

14" Pine stump	N 47 W	53.10'
Telephone Pole	N 23 E	47.65'
12" Pine stump	S 31 E	31.05'

Stuntz Township Notes

October 13, 1913 Field Book #11, page 73-79 shows a distance of 739.5' to the NW 3-56-21 and ties to the corner:

Pine stump	NW	52.9'
Telephone Pole	NE	47.7'

Also shown is a distance of 60.7' east to the center of GN Railroad track.

Stuntz Township Notes

Circa 1914 Field Book #19B, page 16, shows an "I.P." for the corner and a distance of 739.5' east to the NW 3-56-21.

Stuntz Township Notes

Undated Field Book #33, page 14, shows a 1" Pipe for the corner, Field Book #6 ties, and new ties:

2" Gas Pipe	N 44 W	45.0'
2" Gas Pipe	N 26 E	45.0'

Field Book #47(circa 1918) shows the same ties.

Stuntz Township Notes

Circa 1918 Railroad information only shows a distance from the track at station 1542+31 to the corner location of 62'. No angle or corner information is given. Page 114 also shows a distance of 739.9' east to the NW 3-56-21.

DM&IR RR Book 562, SLC Misc File

February 7, 1918 TOWN LINE ROAD - Consolidated and re-named by Resolution of County Board states: To be comprised of the extension of Town Line Road established October 7, 1910, which part is described as beginning at the Southwest Corner of Section 31, Township 57, Range 21, thence running East on Town Line to Southwest Corner Section 35, Township 57, Range 19.

July 21, 1921 Field Book #33, page 49, shows a survey made to set the N 1/4 3-56-21 and the S 1/4 34-57-21 by proportionate method. Distances shown or calculated from the SE 33 to corners: 2633.08' to the S 1/4 34 and 739.65' to the NW 3-56-21.

Stuntz Township Notes

1928 Corner Card Index indicates a 1" Pin for the corner and new ties:

SFP	NW	45.2'
SFP	NE	45.1'
Telephone Pole	NW	43.4'
Telephone Pole	NE	47.5'

Hibbing Road Notes , Co. Surveyors Office-Virginia

Undated DNR mining drawing map shows the corner location and labels it as an I. Pin. Ties listed:

"t"	NE	47.5
"t"	NW	off the page

MN DNR Mining Drawing SLC-00417

Statement of Evidence**Southeast Corner Section 33 T57N, R21W**

November 4, 1957 Notes "Alignment Road S.A. No. 16" show corner ties:

Power Pole	N 32 W	98.3' (nail)
6" White Pine	S 22 W	77.5' (nail)

Distances from stationing of 2635' east to the S 1/4 34, 1897.75' west to the N 1/4 4-56-21, 2693' west to the S 1/4 33, and 740.9' east to the NW 3-56-21.

Hibbing Road Notes, H-CR-16b

Circa 1958-1960 Undated Road notes titled "Township Ties for R21 Twp 57-21 for corners on the north side of Road#16 show an Iron Pin on corner and the 1928 card index ties

Hibbing Road Notes H-CR-16b

March 26, 1959 Field notes "RD NO-SA. 60" show new ties:

6" Balsam	S 57 W	84.5' (nail)
4" Poplar	S 25 E	60.9' (nail)

Editor's note: These ties could be to PI of roads E-W & North.

Hibbing Road Notes, H-CR-60a/V12-66

September 23, 1960 Location of Iron Pins Lot Cors, Townline Road S.A.16, also new RPs on Rainey Rd. S.A.60. At Sta. 165+33 shows a monument symbol and ties:

6" White Pine	S 22 W	77.5'
I.P.	N 45 W	45.2'
REA Pole	N 32 W	81.3'
I.P.	N 25 E	45.0'

Hibbing Road Notes, H-CR-16b

May 2, 1964 A Corner Certificate filed in the Co. Recorder's Office on Feb. 14, 1973 indicates setting a 1 1/8" x 36" Drill Steel for the corner. Ties shown:

6" Balsam	S 57 W	91.22' (nail-old tie)
4" Poplar	S 32 W	66.14' (nail-old tie)
SFP	S 42 E	44.45' (bent-broken off)
18" Spruce	S 48 W	82.65' (nail)
x on rock	N 43 W	88.50' (6'x 5'x 1 1/2')
drill hole in rock	S 03 W	67.60'

Field book #31 shows ties:

6" W. Pine	S 22 W	77.5'
Power pole	N 32 W	81.3'

Odin Rudstrom Field Book #31

Odin Rudstrom, LS #2589-Document #00171491

July 6, 1964 Gunnar Linholm and crew visited the area and set control post in the NE quadrant.

Daily Reports 64-LIND-07, page 5

July 23, 1971 ...went to the SW 34, found a nail on Road surface intersection of CL#16 and CL#60. Found cross on rock NW, found nail in 10" poplar SW. (The distances from rock & poplar didn't match with rd alignments so I left it, then went to S1/4 cor 34.

S. Myrum, 71-MYRU-07

1976 Co. Rd. #60 Plans show a distance from stationing of 2617.1' to the E 1/4 33.

Microfilm Files, Co. Surveyors Office-Virginia

Circa 1980 Distances shown: 2634.46' to the S 1/4 34, 2638.83' to the S 1/4 33, and 741.05' to the NE 4-56-21.

Mylar Records, Co. Surveyors Office-Virginia

August 25, 1988 Field notes "Electronic Survey - Co. Rd. #60 North" indicate a Nail set for the corner, a "P.O.T." 10.0' to the West, and a distance of 1893.75' to the N 1/4 4-56-21.

August 29, 1988 Field notes "Co. Rd #60 East" indicate the corner position as a "P.O.T." with ties:

Anchor Pole	N 59 W	94.11' (nail)
6" Poplar	S 17 W	60.86' (nail)

Distances from stationing are 2634.65' east to the S 1/4 34; 741.55' east to the NE 4-56-21.

Hibbing Road Notes, H-CR-60c

Statement of Evidence**Southeast Corner Section 33 T57N, R21W**

June 30, 2004 A search was made for any corner evidence near the road intersection. Found the 1964 ties of record:

"+" on rock	N 40 W	88.50'
drill hole in rock	S 08 W	67.60'
20" Spruce	S 55 W	82.65' to side center
SFP	S 36 E	44.5' (bent-1' above ground)

Set a MAG Nail from the rock ties. From this point we found:

1' long Rebar	NE	45'±(disturbed-found lying flat)
2" Pipe	NW	45'±(disturbed-found lying flat)

Also found a bridge spike on C/L Co. Hwy #60 north & east and C/L Road #704 to the west. From the MAG Nail the bridge spike falls S 76 W @ 6.35'.

August 25, 2004 Located the MAG Nail(Pt #10) by rapid static GPS.

October 14, 2004 Located the bridge spike(Pt #177)at C/L-C/L using RTK-GPS.

July 28, 2005 Set a MAG Nail(Pt #1002)in blacktop south of the SE 33 position and located using RTK-GPS. After an analysis of the field evidence, record data, and today's survey measurements the obliterated location of the government corner was calculated using a bearing-distance intersection. The bearing used was between GPS Pt #177(bridge spike at C/L-C/L) and GPS Pt #35(NE 4-56-21 Amended Corner) to intersect with the record distance of 2633.08'(July 21, 1921) from the S 1/4 34-57-21. The bearing used placed the corner position on C/L of Co. Hwy #16. Set a Cast Iron Monument from:

MAG Nail	N 74 W	4.81'(GPS Pt #10)
MAG Nail	S 04 W	5.44'(GPS Pt #1002)

Set ties:

Power Pole	N 44 W	98.55'(Nail & disk & tag)
Power Pole	N 60 E	141.93'(Nail & disk & tag)
Drill Hole in Rock	S 14 W	67.23'(5'x 3'x 2' high)
Sawed "+" in Rock	N 43 W	92.50'(6'x 4'x 2' high)

C/L Hwy #60 north falls 11' west. C/L Hwy #60 runs east & C/L #704 runs west.

Andy Butler, Greg Jacobson, and Randy Reed of the St. Louis County Public Works Dept./Land Survey Division
Tom O'Malley, Deputy County Surveyor

March 16, 2007 "CERTIFICATE OF LOCATION OF GOVERNMENT CORNER" was recorded with Document Number 01045937 in the OFFICE OF COUNTY RECORDER, St. Louis County, Duluth, Minnesota. This document was approved and submitted by Thomas O'Malley (LS 12671), County Surveyor, on February 26, 2007 and recorded with Index Z-13.

March 26, 2020 Found the Cast Iron Monument(CIM) on C/L of road east-west and 10.5' east of C/L of road north. Located the CIM with GPS-VRS as point #3841ck. Found the following ties:

Power Pole	N 44 W	98.57'(Nail&Disc, tag)
"X" on rock	N 43 W	92.55'
Power Pole	N 60 E	141.96'(Nail&Disc, tag)
Drill hole in rock	S 14 W	67.16'

Removed the CIM for Road construction.

September 15, 2020 Set a 6" Aluminum Capped Rebar in place for the corner from ties. Located the ACR as set with GPS-VRS as pt. #3841acr as a check. Corner falls 1'north of C/L E-W and 10.5' east of C/L north.

WP, TM, MB

Hwy #60-Project #348247, Book VA-0005, pages 47-48
Public Works Dept./Land Survey Division
Preston Dowell LS#44976, Deputy County Surveyor