



Office of the County Recorder
St. Louis County, Minnesota
Recorded on 07/11/2022
at 10:29AM

Document No. 01447121

Wendy Levitt
County Recorder

By A Johnson Deputy
AFR 20220706008

Auditor

Recording Fee: \$0.00
Well Certificate Fee: \$0.00

This page has been added by the St. Louis County Recorder/Registrar of Titles to add the recording information to the attached document.

Notes:

**CERTIFICATE OF LOCATION
OF GOVERNMENT CORNER**EAST QUARTER Corner of Section 7Township 67 N, Range 20 W, 4th P.M.

STATE OF MINNESOTA, COUNTY OF ST. LOUIS

☒ On 01/06/2021, found a(n): NO EVIDENCE

- ☐ left monument as found ☐ lowered monument
☐ removed monument (explain) ☐ raised monument

☒ On 02/09/2021, set a(n): 3" ALUMINUM MONUMENT
WITH MAGNET STANDING 1.0' ABOVE GROUND AND 1 STEEL
FENCE POST WITH A D.N.D. SIGN

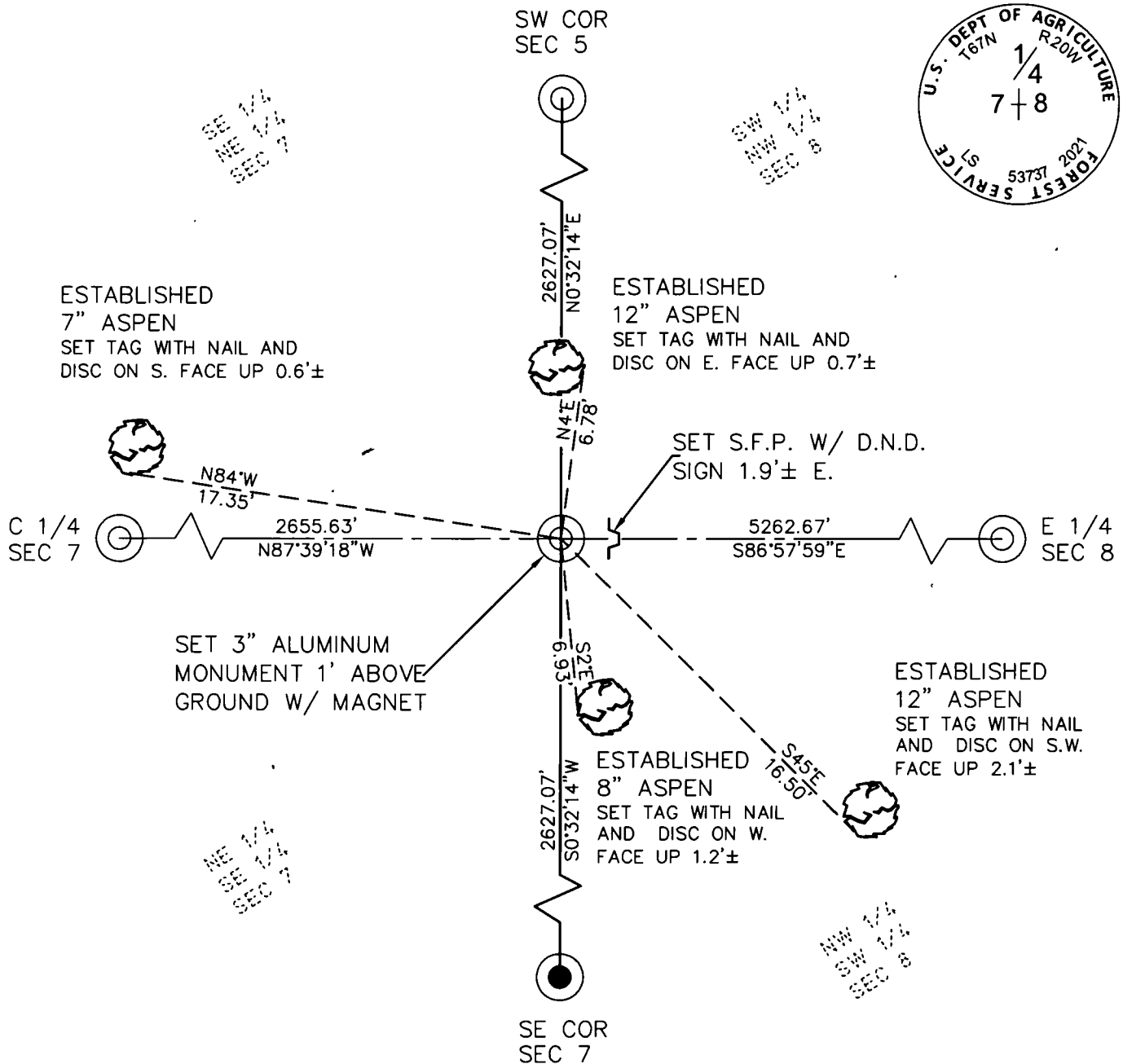
See "Statement of Evidence" for further details (on back)

Office of the County Recorder
St Louis County, MinnesotaRecorded on JUL 11 2022at 10-29 Am
1447121

Document No. _____

Wendy Levitt
County RecorderI hereby certify that the within instrument
was filed in this office for record*(Signature)*
(reserved for recording data)

GPS by I.D.: _____ Co. Proj. No.: _____ Deputy

**"SKETCH OF REFERENCE TIES"**
(not to scale - bearings are magnetic)Ties are measured to center of monument
unless otherwise noted.UNITS = ☐ Metric ☒ English(NAD 83) Latitude (N): 48°18'25.20091"
Longitude (W): 92°56'31.02489"SLCTM 96 Northing: 3897815.809
(NAD 83) Easting: 4637473.271S. P. North Northing: 987223.449
(NAD 83) Easting: 2663129.645I hereby certify that this document and the data contained herein
was prepared by me or under my direct supervision.*Anthony E. Falick*

signature

03/03/2022

date

License No. 53737☐ County Surveyor ☐ Deputy County Surveyor ☐ County Engineer ☒ Land Surveyor ☐ Professional Engineer

Statement of Evidence:

Index No. G5

East Quarter Corner of Section 7, Township 67 North Range 20 West of the Fourth Principal Meridian, St Louis County Minnesota.

Benchmark Engineering contacted the following agencies for information about the above stated corner: United States Forest Service (USFS), St. Louis County Recorder and Surveyor, the BLM's website, Bear Island Surveying, Arro Surveying and Northern Lights Surveying. The information furnished is stated below.

1891

Alvah A. Crampton, U. S. Deputy Surveyor, set a Fir post 4 feet long by 4 inches square for the Quarter Section corner and referenced it with the 2 bearing trees listed below. This information can be found in the original GLO field notes on the BLM web site or in the St. Louis County Recorder's Office.

6" Fir	N 59° E	25 Links (16.5')
6" Fir	S 74° W	31 Links (20.4')

1962

Lyle Wood, Minnesota and Ontario Paper Company (M&O), references the Original GLO bearing trees in M&O's survey documents. Elmer Anderson, M&O Paper, noted the original bearing trees as "out" in November 1964. No other Resurvey references are listed for said East Quarter corner of Section 7. This information can be found by contacting the U. S. Forest Service.

2020

Benchmark Engineering was requested to perform a survey to verify existing and set new monuments as required within several sections of Township 67 North Range 20 West. On January 6th, 2021 a field crew searched the area of said East Quarter corner of Section 7 and found no evidence of the original corner post or reference ties. On February 9th, 2021 a Benchmark field crew made a second search of the area and set a 3 inch Aluminum Monument with a magnet standing 1 foot above ground at a single proportion measurement between the found Southeast corner of Section 7 and the set Southwest corner of Section 5. The field crew also set a steel fence post 1.9 feet East with a Do Not Disturb sign.

The following bearing trees were established:

12" Aspen	N 4° E	6.78'
12" Aspen	S 45° E	16.50'
8" Aspen	S 2° E	6.93'
7" Aspen	N 84° W	17.35'

Reference ties were found or established as shown on front of this document.

Located by RTK GPS