



Office of the County Recorder  
St. Louis County, Minnesota  
Recorded on 01/23/2020  
at 11:24AM

Document No. 01372060

Wendy Levitt  
County Recorder

By B Goodreau Deputy  
AFR 394768

Document: CERT LOCATION/GOVT CORNERS  
Grantor: CERTIFICATE OF  
Grantee: GOVT CORNER POST

---

---

Recording Fee: \$0.00  
Well Certificate Fee: \$0.00

This page has been added by the St. Louis County Recorder/Registrar of Titles to add the recording information to the attached document.

Office of the County Recorder  
St. Louis County, Minnesota

Recorded on: JAN 23 2020

at 11 24 A m  
1372060

Document No.

Wendy Levitt  
County Recorder

I hereby certify that the within instrument  
was filed in this office for record

B. Goodreau

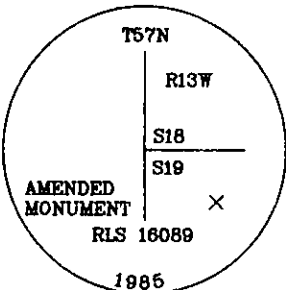
by Deputy

(reserved for recording data)

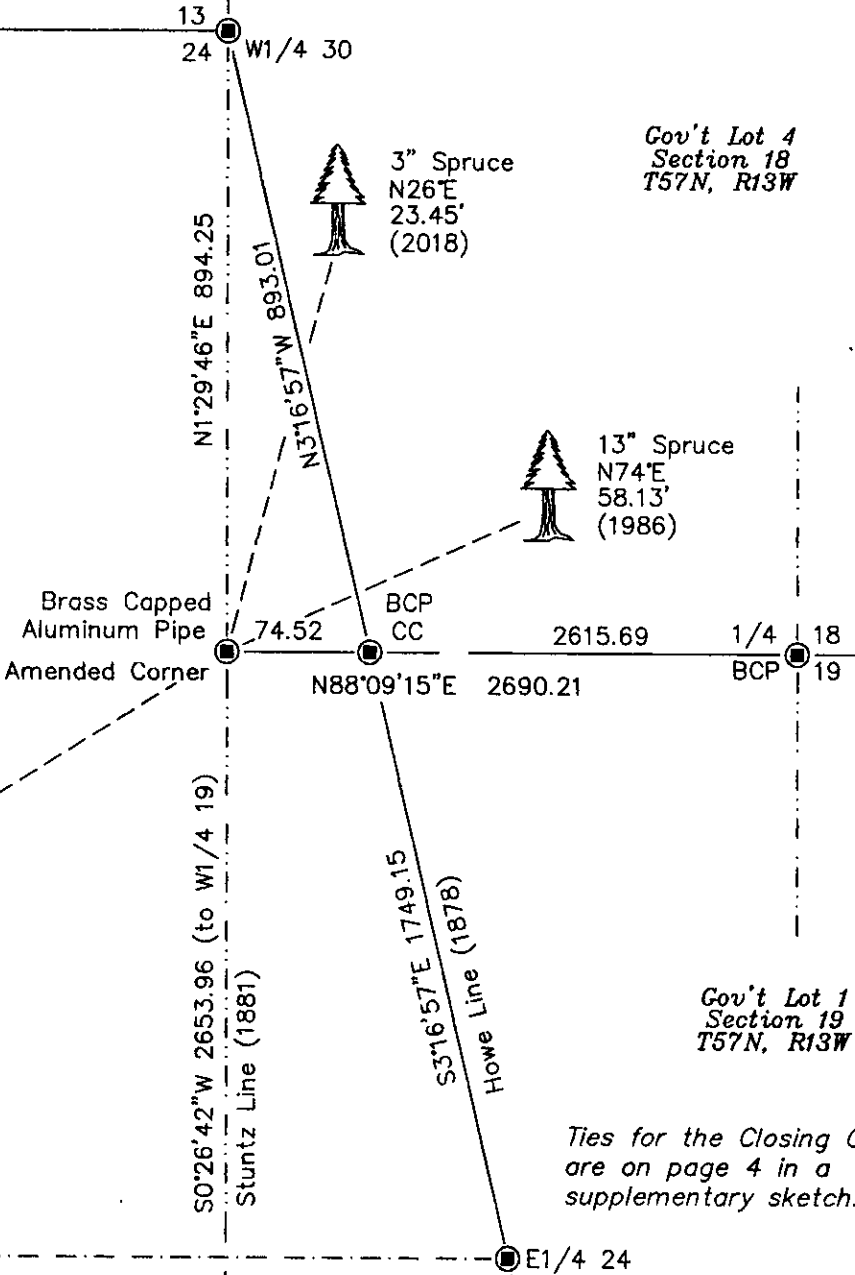
CERTIFICATE OF LOCATION OF  
GOVERNMENT CORNER

Section Corner common to Sections 18 & 19,  
Township 57 North, Range 13 West, 4th P.M.  
STATE OF MINNESOTA, COUNTY OF ST. LOUIS.

On 11/18/1985, a U.S. Forest Service crew, led by Wes Stone, set a 2 1/4" diameter, 3' long Brass Capped Aluminum Pipe (BCP) at a position calculated by LaVerne Leuelling from George Faye 1912 coordinates. Mr. Faye had located 3 original George Stuntz GLO bearing trees and his post during a retracement survey for the Oliver Iron Mining Co. Because this Stuntz corner was junior to the earlier Howe range line, the U.S.F.S. stamped the monument as an Amended Corner & set a Closing Corner on the section line running to the Quarter Corner common to Sections 18 & 19. See "Statement of Evidence" for further details (on back)



Amended Corner Stamping



drawn by: LL

Bearings & distances are based on SLCTM 96  
Coordinates derived by survey grade VRS-GPS

Closing Corner is on Property Line  
Amended Corner = original GLO corner

"SKETCH OF REFERENCE TIES"

(not to scale -  
bearings are magnetic)  
Ties are measured to  
center of monument  
unless otherwise noted.  
UNITS = ☐ Metric ☒ English

|                         |                    |                    |
|-------------------------|--------------------|--------------------|
| (NAD 83) Latitude (N):  | 47°24'55.74297"    | 47°24'55.72309"    |
| Longitude (W):          | 92°02'50.52701"    | 92°02'51.61010"    |
| SLCTM 96 Northing:      | 3,572,460.527 feet | 3,572,458.127 feet |
| (NAD 83) Easting:       | 4,856,898.761 feet | 4,856,824.280 feet |
| S. P. North Northing:   | 663,772.345        | 663,769.316        |
| (NAD 83, feet) Easting: | 2,885,257.158      | 2,885,182.709      |

I hereby certify that this document and the data contained herein was prepared by me or under my direct supervision and that I am a Licensed Land Surveyor under the laws of the State of Minnesota. I further certify that this Certificate of Location of Government Corner is correct and complete to the best of my knowledge.

LaVerne Leuelling

1-8-2020  
date

License No. 16089

**Statement of Evidence for the Section Corner common to Sections 18 & 19,  
T57N, R13W, of the Fourth Principal Meridian.**

**Amended Monument**

9/2/1878: The Howe brothers, while under contract with the General Land Office, set a 4' post intended to be common for Sections 13 & 24 in T57N, R14W and Sections 18 & 19, in T57N, R13W. 2 feature calls were noted within a quarter mile. They are listed below, along with the Howes' BTs:

|  |  |  |  |  |   |
|--|--|--|--|--|---|
| 9" Spruce<br>N39°W<br>29 links<br>(19.14') | 4" Spruce<br>N49°E<br>27 links<br>(17.82') | 10" Birch<br>S78°E<br>24 links<br>(15.84') | 18" Aspen<br>S69°W<br>50 links<br>(33.00') | Swamp<br>South<br>12.50 chains<br>(825') | 8 link Stream (E'ly)<br>North<br>20 chains<br>(1320') |
|--|--|--|--|--|---|

4/8/1881: Between the Town Corner corner common to T57N, R13 & 14W (SW of 31) and the E1/4 of Section 24, T57N, R14W (theoretically also the W1/4 of 18, T57N, R13W), George Stuntz found no evidence of the Howe corners during his retracement survey of the Howe range line. He therefore had set section & quarter corners every 40 chains along a new range line. 15 chains north of this corner, Mr. Stuntz encountered the Howe blazed line for the first time & thereafter began to follow it for alignment. At this corner, which was initially intended to control 4 sections, he set the following BTs:

|  |   |  |  |   |  |
|--|---|--|--|---|--|
| 7" Spruce<br>N21°E<br>24 links<br>(15.84') | 9" Tamarack<br>N66°W<br>12 links<br>(7.92') | 6" Tamarack<br>S42°W<br>37 links<br>(24.42') | 7" Tamarack<br>S50°E<br>44 links<br>(29.04') | Swamp<br>South (var. 5°E)<br>1 chain<br>(66') | E1/4 13, T57N, R14W (Howe)<br>North (var. 7°E)<br>54.05 chains<br>(3567.30') |
|--|---|--|--|---|--|

4/1912: During a retracement survey in T57N, R14W, George Faye working for the Oliver Iron Mining Co., had reason to retrace the lower 3 1/2 miles of the range lines between T57N, R14W & T57N, R13W. In that survey he recovered the bulk of both the Howe & the Stuntz GLO corners. Starting at the Howe section corner to Sections 13 & 24 (which he assigned the coordinates of 0,0), he traversed southerly, with a 1' transit and a steel tape, along a base line. From that base line he tied into both the Howe & Stuntz corners and assigned each of them coordinates. He also mentioned topographic features that he encountered along his base line. The coordinates for this Stuntz corner were (896.6'S, 4.3'E). For the most part, his base line fell to the west of both original range lines. At the north end of the line, it was near the Stuntz line. At this Stuntz corner common to Sections 18 & 19, he found the Stuntz post and replaced it with a new one. He noted the following bearing trees:

|                        |  |   |  |   |                                   |                                      |
|------------------------|--|---|--|---|-----------------------------------|--------------------------------------|
| 7" Spruce<br>Not Found | 12" Tamarack<br>N70°W<br>12 links<br>(7.92') | 10" Tamarack<br>S34°W<br>37 links<br>(24.42') | Rotted Tamarack<br>S56°E<br>44 links<br>(29.04') | Swamp<br>North<br>16' (on<br>base line) | NE 24 (Howe)<br>N0°45'W<br>896.1' | E1/4 24 (Howe)<br>S7°16'E<br>1760.0' |
|------------------------|--|---|--|---|-----------------------------------|--------------------------------------|

Note: Mr. Faye's basis of bearings  
appears to have been Astronomic  
North.

W1/4 19 (Stuntz)  
S1°06'E  
2656.3'

9/21/1936: C.M. Flanagan, CCC forester, found a 3" x 3" replacement wood stake, presumably set by George Faye. In 1936, he found the rotted original stake lying alongside the Faye stake. He also located 2 of George Stuntz' GLO bearing trees. As Mr. Flanagan described the corner as being common to 4 sections, his description of the BTs confirms that it was the Stuntz corner that he found. He also stated that the corner was on the north edge of an alder & cedar swamp.

|  |  |   |
|--|--|---|
| 10" Tamarack<br>N66°W<br>12 links<br>(7.92')<br>(GLO)<br>scribed<br>"S13 BT" | 7" Tamarack<br>S42°W<br>37 links<br>(24.42')<br>(GLO)<br>scribed<br>"R14 S24 BT" | 4" Tamarack<br>S87°E<br>23.5 links<br>(15.51')<br>Location Poster |
|--|--|---|

Summer 1985: In a process that is completely explained on the Corner Certificate for the Howe Section Corner for 13 & 24, T57N, R14W, LaVerne Leueling, RLS 16089, with the assistance of Jim Colburn, Regional Office photogrammetrist for the U.S. Forest Service, developed state plane coordinates (NAD27, MN) for all of the corners tied into by George Faye. They also mapped (with an accuracy of 2±) all of the feature calls mentioned by the 3 historical surveys.

11/18/1985: After searches along the town line had resulted in the recovery of evidence at 5 of the GLO corners tied into by Mr. Fay, Mr. Leueling tweaked the Faye coordinates to accommodate the the found corners. On this date, Wes Stone, Gary Doney & Laura Schanlaub, of the U.S. Forest Service visited this site to make one final search. After not recovering any additional physical evidence, they set a standard 3' long brass capped aluminum pipe at the pre-calculated position. They established the following new references:

|  |                              |   |   |  |
|--|------------------------------|---|---|--|
| 10" Tamarack<br>N5°E<br>45.53'<br>BTs blazed, painted & scribed<br>"BT". BT tag affixed. | 6" Spruce<br>N74°E<br>58.13' | 12" Tamarack<br>S35°W<br>8.06'<br>Attention Sign<br>Location Poster | SPCS 27 (MN North)<br>Y = 335,712.146 ft.<br>X = 2,260,568.688 ft.<br>Point #2200 | Converted to SPCS 83<br>Y = 663,769.025 ft.<br>X = 2,885,184.408 ft. |
|--|------------------------------|---|---|--|

Since the Stuntz work was junior to the Howe range line, the found original Stuntz GLO corner became an Amended Corner. A Closing Corner was set on the Howe line & it was the true SW of Section 18.

|   |  |   |   |   |  |
|---|--|---|---|---|--|
| To CC 18/19<br>N87°41'17"E<br>75.00'<br>(Amended) | To 1/4 18/19<br>N87°39'49"E<br>2688.40'<br>(T57N,R13W) | To W1/4 18<br>N2°30'52"W<br>2638.33'<br>(Amended) | To W1/4 19<br>S0°01'25"E<br>2654.03'<br>(Amended) | To NE 24<br>N0°44'50"W<br>896.05'<br>(Howe) | To E1/4 24<br>S6°11'08"E<br>1752.61'<br>(Howe) |
|---|--|---|---|---|--|

**Statement of Evidence for the Section Corner common to Sections 18 & 19,  
T57N, R13W, of the Fourth Principal Meridian.**

**Amended Monument**

9/11/1986: The Closing Corner was also a 36" x 2 1/4" Brass Capped Aluminum Pipe. It was placed on a 4 foot long Spruce pole. It was set at the time that true line was run. The CC ties were:

|                                     |           |                       |                       |                       |
|-------------------------------------|-----------|-----------------------|-----------------------|-----------------------|
| 10" Spruce                          | 10" Cedar | Note: The bearing for | Point #2180 = CC      |                       |
| N79°W                               | S11°E     | the Cedar was later   | SPCS 27 (MN North)    | Converted to SPCS 83  |
| 5.92 ft.                            | 48.88 ft. | found to be reversed. | Y = 335,715.201 ft.   | Y = 663,772.079 ft.   |
| Blazed, scribed "BT" & painted red. |           |                       | X = 2,260,643.388 ft. | X = 2,885,259.108 ft. |
| One tree has Section Corner tag.    |           |                       |                       |                       |

From the Closing Corner to Sections 18 & 19, T57N, R13W (true SW 18):

|               |            |               |            |
|---------------|------------|---------------|------------|
| To CC W1/4 19 | To E1/4 24 | To CC W1/4 18 | To NE 24   |
| S3°43'51"E    | S3°44'01"E | N4°08'33"W    | N4°03'07"W |
| 2652.74'      | 1749.14'   | 2639.66'      | 895.19'    |
|               | (Howe)     | (Amended)     | (Howe)     |

See Superior National Forest Photo Project fieldbook 8, pages 20 & 36.  
See Superior National Forest Photo Project fieldbook 23, page 23 for CC.

1989: John Zakovich, draftsman for the West Cadastral Zone of the Superior National Forest, prepared a certificate of survey for T57N, R13W. It was never signed or recorded, but the original was kept in the Forest Supervisor's Office in Duluth, Minnesota. It showed:

|                          |             |                       |
|--------------------------|-------------|-----------------------|
| To NE 24, T57N, R14W:    | N1°02'34"E  | 894.16 ft. (SPCS 27)  |
| To W1/4 19, T57N, R13W:  | S0°01'49"W  | 2653.70 ft. (SPCS 27) |
| To S1/4 18, T57N, R13W:  | N87°39'27"E | 2688.62 ft. (SPCS 27) |
| To CC 18/19, T57N, R13W: | N87°39'27"E | 74.76 ft. (SPCS 27)   |

2017 through 2020: LaVerne Leuelling, the Superior National Forest and the St. Louis County Surveyor's Office entered into an informal agreement to complete corner certificates related to the 1980's era remonumentation work. St. Louis County agreed to provide the necessary field work while LaVerne Leuelling would draft the corner certificates and provide the final certification. The Superior National Forest agreed to provide necessary supplies.

Winter 2017: LaVerne Leuelling re-adjusted the 1985 project, using recent RTK GPS observations made by the St. Louis County Surveyor's Office & Northern Lights Surveying Co. All of the measurements made during the 1985 project were utilized.

**Amended Corner**

|                  |                            |                   |
|------------------|----------------------------|-------------------|
| Geodetic         | SPCS (Harn 1996, MN North) | SLCTM 96          |
| 47°24'55.72360"N | Y = 663,769.394 ft.        | 3,572,458.188 ft. |
| 92°02'51.58178"W | X = 2,885,184.656 ft.      | 4,856,826.228 ft. |

A simultaneous re-adjustment of Faye's retracement around found corners produced a residual of 2.2'. This figure was well within the expected tolerances for Mr. Faye's time & technology.

**Closing Corner**

|                  |                            |                   |
|------------------|----------------------------|-------------------|
| Geodetic         | SPCS (Harn 1996, MN North) | SLCTM 96          |
| 47°24'55.74338"N | Y = 663,772.419 ft.        | 3,572,460.581 ft. |
| 92°02'50.59157"W | X = 2,885,259.594 ft.      | 4,856,901.198 ft. |

|                          |             |                       |
|--------------------------|-------------|-----------------------|
| To NE 24, T57N, R14W:    | N0°44'50"E  | 896.05 ft. (SPCS 83)  |
| To W1/4 19, T57N, R13W:  | S0°01'25"W  | 2654.03 ft. (SPCS 83) |
| To S1/4 18, T57N, R13W:  | N87°39'49"E | 2688.40 ft. (SPCS 83) |
| To CC 18/19, T57N, R13W: | N87°41'17"E | 75.00 ft. (SPCS 83)   |

1/25/2018: Dylan Otto & Zach Neunsinger, working for the St. Louis County Surveyor's Office & with LaVerne Leuelling, found 2 Forest Service ties and the slightly leaning (NW) BCP. They made a survey grade GPS observation over the pipe and established a new tie.

|                          |              |                  |
|--------------------------|--------------|------------------|
| 13" Spruce               | 17" Tamarack | 3" Spruce        |
| N74°E                    | S35°W        | N26°E            |
| 58.13'                   | 8.06'        | 23.45'           |
| (1986)                   | (1986)       | (2018)           |
| Old nails & tags present |              | tag, nail & disk |
| New nail & disk          |              |                  |

|                          |             |                       |
|--------------------------|-------------|-----------------------|
| To NE 24, T57N, R14W:    | N1°00'45"E  | 894.14 ft. (SPCS 83)  |
| To W1/4 19, T57N, R13W:  | S0°02'20"E  | 2653.62 ft. (SPCS 83) |
| To S1/4 18, T57N, R13W:  | N87°40'13"E | 2689.87 ft. (SPCS 83) |
| To CC 18/19, T57N, R13W: | Not found   |                       |

|                         |             |                        |
|-------------------------|-------------|------------------------|
| To NE 24, T57N, R14W:   | N1°29'46"E  | 894.25 ft. (SLCTM 96)  |
| To W1/4 19, T57N, R13W: | S0°26'42"W  | 2653.96 ft. (SLCTM 96) |
| To S1/4 18, T57N, R13W: | N88°09'15"E | 2690.21 ft. (SLCTM 96) |

|                          |                          |                       |
|--------------------------|--------------------------|-----------------------|
| SPCS 83 (Harn, MN North) | Geodetic                 | SLCTM 96              |
| Y = 663,769.316 ft.      | Lat. = 47°24'55.72309"N  | N = 3,572,458.127 ft. |
| X = 2,885,182.709 ft.    | Long. = 92°02'51.61010"W | E = 4,856,824.280 ft. |
|                          |                          | Point #74             |

See St. Louis County fieldbook VA-0039, pages 112 & 113.

12/20/2019: Measurements made on all of the St. Louis County GIS aerial photography placed this Corner 71 feet (1.08 chains) north of the north edge of a large swamp.

Statement of Evidence for the Section Corner common to Sections 18 & 19,  
T57N, R13W, of the Fourth Principal Meridian.  
Closing Corner

1/25/2018: On the same day, Dylan Otto & Zach Neunsinger found the blown-over USFS CC BT with an Attention sign & 2 tags. They also found 2 steel sign posts with boundary signs. From the 3 reference objects they narrowed the search area to a 2' by 2' hole in the ice, but were unable to find the BCP. No bearing & distance was given to the BT, so we don't know which one was found.

|                 |                       |
|-----------------|-----------------------|
| Steel Sign Post | Steel Sign Post (SSP) |
| East            | North                 |
| 3'±             | 5'±                   |
| (1986)          | (1986)                |

See St. Louis County fieldbook VA-0039, page 114.

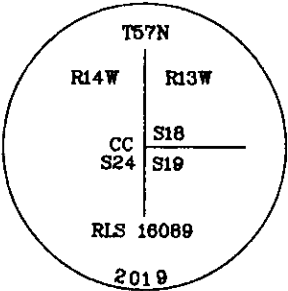
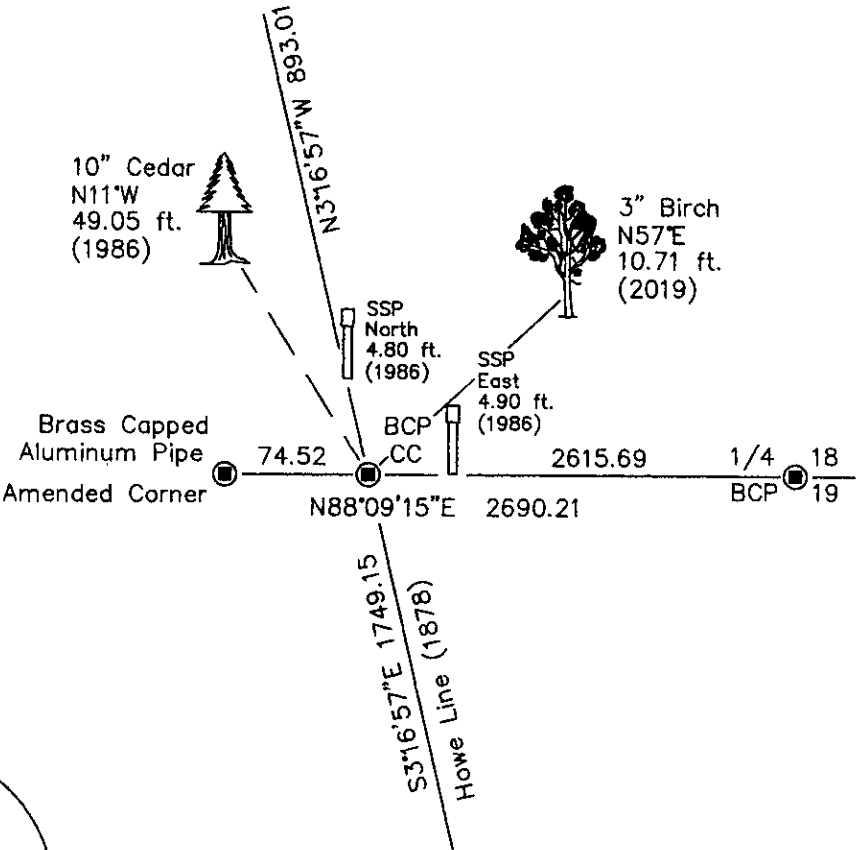
On 11/6/2019: The St. Louis County Surveyor's Office reset the Forest Service BCP at the intersection of the line common to Sections 18 & 19 (as monumented) and the Howe range line (as monumented). The BCP was found lying on the ground in wet tag alder by Matt Brunner & Tom Mariucci. When they dug the hole at the intersection coordinates, they encountered the pointed stake upon which the BCP had been impaled in 1986. They found three USFS references and established a fourth. A VRS-GPS observation was made over the BCP.

|                 |                        |           |
|-----------------|------------------------|-----------|
| 10" Cedar       | Steel Sign Posts (SSP) | 3" Birch  |
| N11°W           | North East             | N57°E     |
| 49.05 ft.       | 4.80 ft. 4.90 ft.      | 10.71 ft. |
| (1986)          | (1986) (1986)          | (2019)    |
| leans northerly |                        |           |
| new nail & disk |                        |           |

|                          |             |                        |
|--------------------------|-------------|------------------------|
| To NE 24, T57N, R14W:    | N3°45'59"W  | 892.90 ft. (SPCS 83)   |
| To E1/4 24, T57N, R14W:  | S3°45'59"E  | 1748.93 ft. (SPCS 83)  |
| To S1/4 18, T57N, R13W:  | N87°40'13"E | 2615.36 ft. (SPCS 83)  |
| To AM 18/19, T57N, R13W: | S87°40'13"W | 74.51 ft. (SPCS 83)    |
| To NE 24, T57N, R14W:    | N3°16'57"W  | 893.01 ft. (SLCTM 96)  |
| To E1/4 24, T57N, R14W:  | S3°16'57"E  | 1749.15 ft. (SLCTM 96) |
| To S1/4 18, T57N, R13W:  | N88°09'15"E | 2615.69 ft. (SLCTM 96) |
| To AM 18/19, T57N, R13W: | S88°09'15"W | 74.52 ft. (SLCTM 96)   |

|                          |                          |                       |
|--------------------------|--------------------------|-----------------------|
| SPCS 83 (Harn, MN North) | Geodetic                 | SLCTM 96              |
| Y = 663,772.345 ft.      | Lat. = 47°24'55.74297"N  | N = 3,572,460.527 ft. |
| X = 2,885,257.158 ft.    | Long. = 92°02'50.52701"W | E = 4,856,898.761 ft. |
|                          |                          | Point #826            |

See St. Louis County fieldbook VA-0013 page 55.



Closing Corner Stamping