



Office of the County Recorder
St. Louis County, Minnesota
Recorded on 01/15/2020
at 1:48 PM

Document No. 01371542

Wendy Levitt
County Recorder

By B Goodreau Deputy
AFR 394766

Document: CERT LOCATION/GOVT CORNERS
Grantor: CERTIFICATE OF
Grantee: GOVT CORNER POST

Recording Fee: \$0.00
Well Certificate Fee: \$0.00

This page has been added by the St. Louis County Recorder/Registrar of Titles to add the recording information to the attached document.

CERTIFICATE OF LOCATION OF
GOVERNMENT CORNER

Section Corner common to Sections 22, 23, 26 & 27,
Township 57 North, Range 13 West, 4th P.M.
STATE OF MINNESOTA, COUNTY OF ST. LOUIS.

On 10/12/1988: a U.S. Forest Service crew consisting of
Charlie Chernak, Gary Doney & Laura Schanlaub set a 2 1/4"
Brass Capped Aluminum Pipe (BCP) at a position determined
by LaVerne Leuelling prior to his disparture from the Forest
Service which best fit the calls for the Jenkins & Reno creeks.
It also fit various swamp calls as well.
On 4/4/2019: The St. Louis County crew of Matt Brunner
& Tom Mariucci made a VRS-GPS observation over the
found BCP. They also established three new references.

See "Statement of Evidence" for further details (on back)

Office of the County Recorder
St. Louis County, Minnesota

Recorded on: JAN 15 2020

at 01 48 0 m

1371542

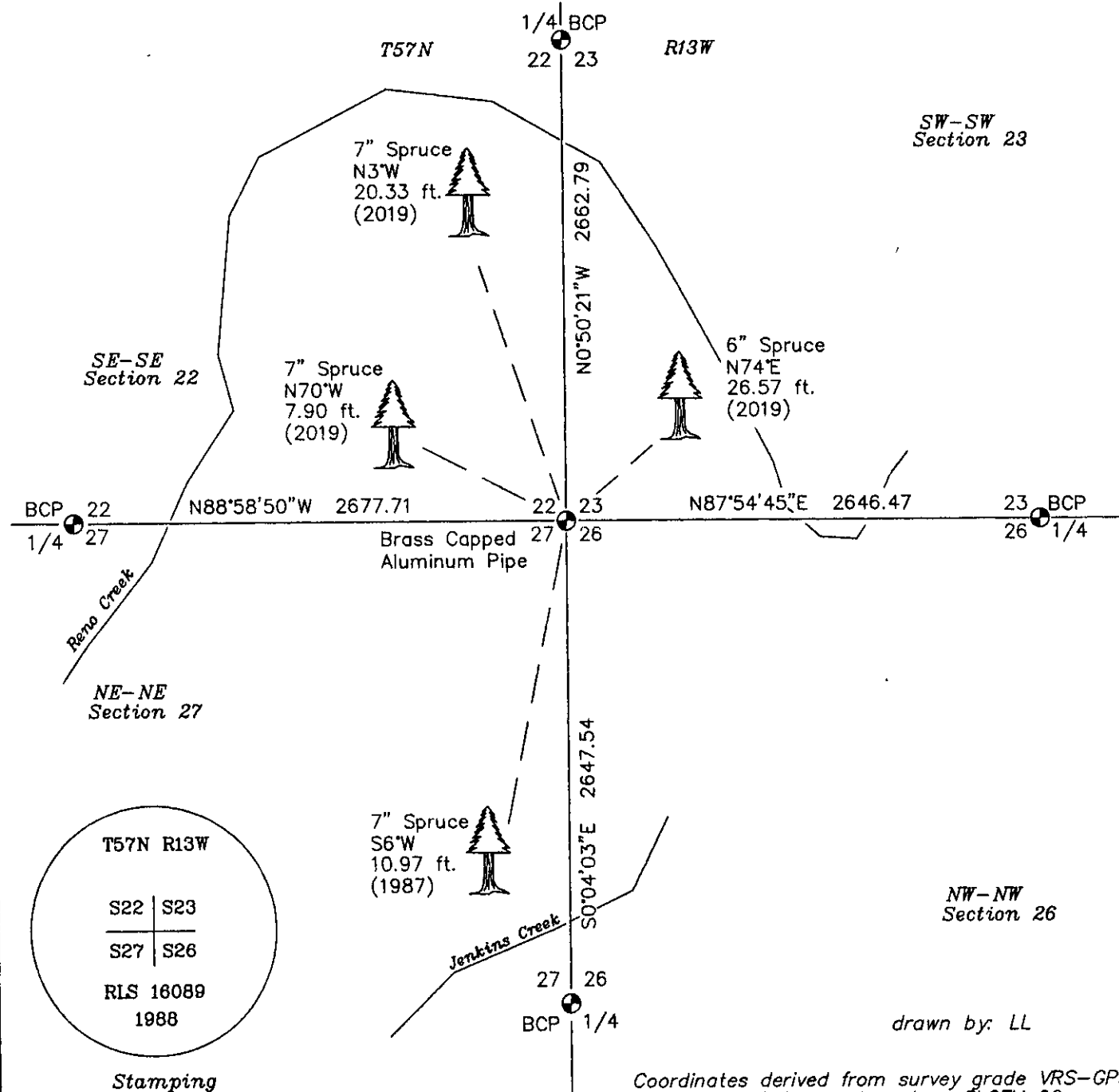
Document No.

Wendy Levitt
County Recorder

I hereby certify that the within instrument
was filed in this office for record

by B. Goodreau
Deputy

(reserved for recording data)



"SKETCH OF REFERENCE TIES"
(not to scale - bearings are magnetic)



Ties are measured to center of monument
unless otherwise noted.

UNITS = ☐ Metric ☒ English

(NAD 83) Latitude (N): 47°24'04.23390"
Longitude (W): 91°57'44.22536"

SLCTM 96 Northing: 3,567,361.819 ft.
(NAD 83) Easting: 4,877,997.944 ft.

S. P. North Northing: 658,852.697
(NAD 83, feet) Easting: 2,906,395.930

I hereby certify that this document and the data contained herein was prepared by me or under
my direct supervision and that I am a Licensed Land Surveyor under the laws of the State of
Minnesota. I further certify that this Certificate of Location of Government Corner is correct and
complete to the best of my knowledge.

LaVerne Leuelling

1-8-2020
date

License No. 16089

**Statement of Evidence for the Section Corner common to Sections 22, 23, 26 & 27,
T57N, R13W, of the Fourth Principal Meridian.**

4/21/1881: George Stuntz, GLO Deputy Surveyor, set a 6' long 4" x 4" wooden post for the section corner. The corner fell in a swamp. There were multiple feature calls in all 4 directions. There was a call for Jenkins Creek & 4 calls for Reno Creek. There was even a call for the DM & IR RR bed which was then under preliminary construction & identified as a trail. The various calls are listed after the following bearing trees:

10" Spruce S46°W 28 links (18.48 ft.)	6" Spruce S38°E 35 links (23.10 ft.)	8" Spruce N15°E 29 links (19.14 ft.)	13" Tamarack N87°W 30 links (19.80 ft.)			
Jenkins Creek south 46.80 ch. (3088.80')	swamp exit west 30 chains (1980')	swamp entry west 45 chains (2970')	Reno Creek west 54 chains (3564')	swamp exit west 65 chains (4290')	Reno Creek east 33.92 ch. (2238.72')	Reno Creek east 39.42 ch. (2601.72')
Reno Creek north 20 chains (1320')	swamp exit north 34 chains (2244')	swamp entry south 23.50 ch. (1551')	swamp exit south 4 chains (264')			

Section line between 22 & 27 = West 80.10 chains (5286.60').
Section line between 26 & 35 = East 79.92 chains (5274.72').

1985/1986: LaVerne Leuelling utilized photogrammetric mapping (scale of 1" = 200') to locate a point which best matched the feature calls (especially the creeks) made by George Stuntz. That position was intended to serve as the prime search position & default corner location. Sometime during the subsequent 30 years, the aerial photography and the photogrammetric mapping was misplaced by the Forest Service. James Colburn, the photogrammetrist, also passed away. In an effort to replicate the methodology by which the feature call position was determined, Mr. Leuelling utilized the St. Louis County GIS and un-rectified & un-triangulated 2013 aerial photography. Despite the fact that this source did not provide quite the same detail and did not have the same accuracy, the result does indicate which topographic calls were found reliable in 1985/6. This was done in August 2019.

Jenkins Creek south 72.06 ch. (4756')	swamp exit west 27.61 chains (1822')	swamp entry west 48.38 chains (3193')	*Reno Creek west 55.52 chains (3664')	*swamp exit west 65.20 chains (4303')	*Reno Creek east 33.77 ch. (2229')	*Reno Creek east 39.41 ch. (2601')
*Reno Creek north 21.23 chains (1401')	swamp exit north 32.41 chains (2139')	*swamp entry south 23.91 ch. (1578')	*swamp exit south 3.29 chains (217')			

10/12/1988: Charlie Chernak, Gary Doney & Laura Schanlaub, Superior National Forest, made a solar observation at photo target 53, traversed to Mr. Leuelling's feature call position, and set a 2 1/4" diameter, 36" long Brass Capped Aluminum Pipe after not finding any evidence of the GLO survey. The corner fell at the base of high ground near a spruce swamp. The references were:

7" Spruce N48°W 20.69 ft.	6" Spruce N53°E 24.64 ft.	5" Spruce S58°E 4.02 ft.	4" Spruce S6°W 10.97 ft.	6" Spruce N22°W 7.10 ft.
The 2 bearing trees were blazed at the base, scribed "BT" & painted red. A BT tag was affixed.				Attention Sign Location Poster

SPCS (NAD27, MN North) Converted to SPCS 83
Y = 330,795.00 ft. Y = 658,851.514 ft.
X = 2,281,779.00 ft. X = 2,906,394.471 ft.
Point #1389

See Superior National Forest Photo Project fieldbook 33, pages 48 - 50.

1989: John Zakovich, of the Superior National Forest & the West Zone Cadastral Unit, prepared a certificate of survey for T57N, R13W. The unsigned original resides in the Supervisor's Office of the Superior National Forest in Duluth, Minnesota. It shows:

To E1/4 22:	N1°17'36"W	2662.96 ft. (SPCS 27)
To S1/4 23:	N87°25'26"E	2647.68 ft. (SPCS 27)
To W1/4 26:	S0°27'57"E	2645.08 ft. (SPCS 27)
To S1/4 22:	N89°26'19"W	2676.18 ft. (SPCS 27)

**Statement of Evidence for the Section Corner common to Sections 22, 23, 26 & 27,
T57N, R13W, of the Fourth Principal Meridian.**

2017 through 2020: LaVerne Leuelling, the Superior National Forest and the St. Louis County Surveyor's Office entered into an informal agreement to complete corner certificates related to the 1980's era remonumentation work. St. Louis County agreed to provide the necessary field work while LaVerne Leuelling would draft the corner certificates and provide the final certification. The Superior National Forest agreed to provide necessary supplies.

Winter 2017: LaVerne Leuelling re-adjusted the Superior National Forest's Photo Project using a least squares adjustment of all traverses. The project was placed on NAD83 (1996 Harn, MN North) by utilizing new RTK GPS observations by St. Louis County & Northern Lights Survey Company.

SPCS 83 (Harn, MN North)	Geodetic	SLCTM 96
Y = 658,851.482 ft.	Lat. = 47°24'04.222212"N	N = 3,567,360.617 ft.
X = 2,906,394.477 ft.	Long. = 91°57'44.24673"W	E = 4,877,996.481 ft.

To E1/4 22:	N1°18'10"W	2662.85 ft. (SPCS 83)
To S1/4 23:	N87°25'28"E	2647.63 ft. (SPCS 83)
To W1/4 26:	S0°31'22"E	2646.21 ft. (SPCS 83)
To S1/4 22:	N89°27'16"W	2676.98 ft. (SPCS 83)

4/4/2019: Matt Brunner & Tom Mariucci found the Forest Service BCP in a spruce swamp. They made a VRS-GPS observation over it. As they only recovered one tie dating to 1987, they placed a BT tag on the face of, and a nail & disk in the base of three new Spruce reference trees.

7" Spruce	7" Spruce	7" Spruce	6" Spruce
S6°W	N70°W	N3°W	N74°E
10.97 ft.	7.90 ft.	20.33 ft.	26.57 ft.
(1987)	(2019)	(2019)	(2019)

All four references now have a new nail & disk.

SPCS 83 (Harn, MN North)	Geodetic	SLCTM 96
Y = 658,852.697 ft.	Lat. = 47°24'04.23390"N	N = 3,567,361.819 ft.
X = 2,906,395.930 ft.	Long. = 91°57'44.22536"W	E = 4,877,997.944 ft.
		Point #570

To E1/4 22:	N1°19'25"W	2662.44 ft. (SPCS 83)	To E1/4 22:	N0°50'21"W	2662.79 ft. (SLCTM 96)
To S1/4 23:	N87°25'41"E	2646.12 ft. (SPCS 83)	To S1/4 23:	N87°54'45"E	2646.47 ft. (SLCTM 96)
To W1/4 26:	S0°33'07"E	2647.19 ft. (SPCS 83)	To W1/4 26:	S0°04'03"E	2647.54 ft. (SLCTM 96)
To S1/4 22:	N89°27'53"W	2677.26 ft. (SPCS 83)	To S1/4 22:	N88°58'50"W	2677.71 ft. (SLCTM 96)

See St. Louis County fieldbook VA-0008, pages 102 & 103.