



Office of the County Recorder
St. Louis County, Minnesota
Recorded on 06/14/2017
at 1:57 PM

Document No. 01311091

Mark A. Monacelli
County Recorder

By B Goodreau Deputy
AFR 363489

Document: CG-CERT LOCATION/GOVT CORNERS
Grantor: CERTIFICATE OF
Grantee: GOVT CORNER POST

Recording Fee: \$0.00
Well Certificate Fee: \$0.00

This page has been added by the St. Louis County Recorder/Registrar of Titles to add the recording information to the attached document.

CERTIFICATE OF LOCATION
OF GOVERNMENT CORNER

South Quarter Corner of Section 22
Township 60 N , Range 14 W , 4th P.M.
STATE OF MINNESOTA, COUNTY OF ST. LOUIS.


Office of the County Recorder
St. Louis County, MINNESOTA

Recorded on: JUN 14 2017
at 1:57 p m

Document No 1311091

Mark A. Monacelli
County Recorder

I hereby certify that the within instrument
was filed in this office for record

by  Deputy
(reserved for recording data)

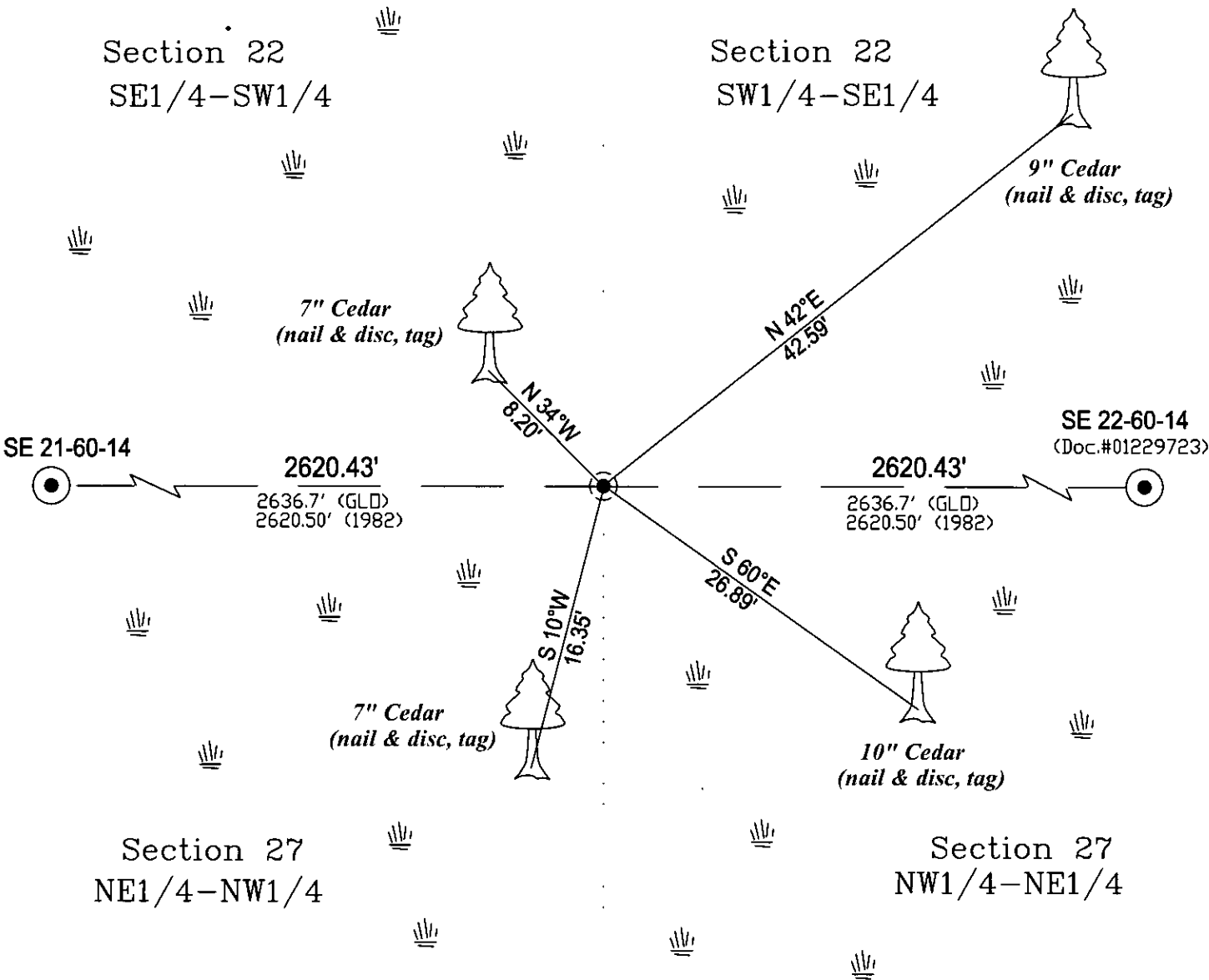
GPS I.D.: PL #201 Co. Proj. No.: 261098

☐ On _____, found a(n): _____
DATE

☐ left monument as found ☐ lowered monument
☐ removed monument (explain) ☐ raised monument

☒ On March 31st 2016, set a: 6' long 5/8" Aluminum Capped Rebar
DATE
at calculated single proportion postion.

See "Statement of Evidence" for further details (on back)



drawn by: Jake

"SKETCH OF REFERENCE TIES"

(not to scale - bearings are magnetic)

Ties are measured to center of monument
unless otherwise noted.

NAD 83 (1996 adjustment)

Latitude (N): 47°39'31.39478"

Longitude (W): 92°06'26.20459"

SLCTM 96 Northing: 3661118.194 ft.

Easting: 4841673.577 ft.

I hereby certify that this survey, plan, or report was prepared by me or under my direct supervision and that I am a duly Licensed Land Surveyor, under the laws of the state of Minnesota. I further certify that this certificate of location of government corner is correct and complete to the best of my knowledge and belief.


signature

Name: Preston Dowell

5-23-17
date

License No. 44976

☐ County Surveyor

☒ Deputy County Surveyor

☐ Professional Land Surveyor

Statement of Evidence**South Quarter Corner Section 22, T60N, R14W****September 30th 1882**

Original Subdivision of T60N – R14W was run N 89°51'W on true line between Sections 22 & 27 and at 39.95 of a 79.90 chain mile set a post in the ground for ¼ Corner from which:

6" Cedar	N 20°E – 43 links
6" Spruce	S 37°E – 31 links

George R. Stuntz
U.S. Deputy Surveyor

October 8th 1981

Corner Card States: "Corner set online and at half the distance between SE & SW. Set a 3' Sq. Aluminum Capped Pipe.

BT's are blazed, scribed, nailed and tagged:"

6" Cedar	S 18°E – 14.81'
6" Cedar	N 89°W – 22.70'
3" Cedar	N 24°W – 15.67'
5" Cedar	N 72°E – 34.00'

Corner in wet Cedar Swamp

RCB,DP, KH
St. Louis County Surveyor's Office

April 12th 1982

A half section map for Section 22 was drawn from a subdivision that shows the S1/4 Corner of section 22 as an aluminum capped tube (ACT) with the following distances to adjoining corners:

2620.50' east to the SE Section 22

2620.50' west to the SE Section 21

NOTE: A partial subdivision (undated) of Section 27 shows the same information

St. Louis County Surveyor's Office

Undated

The County Mylar reflects the same information as the half section maps with the addition of the following references:

6" Cedar	S 18°E – 14.81'
6" Cedar	N 89°W – 22.70'
3" Cedar	N 24°W – 15.67'
5" Cedar	N 72°E – 34.00'

St. Louis County Surveyor's Office

March 30th 2016

A diligent search was made for any evidence of the corner but nothing was found.

Greg Jacobson & Dylan Otto
St. Louis County Land Survey Division

March 31st 2016

Another search was made. Finding nothing, a 6 foot long 5/8 inch aluminum capped rebar (ACR) was set at the calculated single proportion method position (pt. #201). The following new references were established:

9" Cedar	N 42°E – 42.59' (nail & disc, tag)
10" Cedar	S 60°E – 26.89' (nail & disc, tag)
7" Cedar	S 10°W – 16.35' (nail & disc, tag)
7" Cedar	N 34°W – 8.20' (nail & disc, tag)

The monument falls in a wet cedar swamp with standing water. Distances of 2620.43' east and west to adjoining section corners can be calculated.

Dylan Otto and Zachary Neunsinger
St. Louis County Land Survey Division
Preston Dowell – Deputy County Surveyor