

# CERTIFICATE OF LOCATION OF GOVERNMENT CORNER

Witness Corner to Meander Corner #64 of Section 5  
Township 62 N, Range 15 W, 4th P.M.  
STATE OF MINNESOTA, COUNTY OF ST. LOUIS.

☒ On April 3rd 2013, found a(n) Aluminum Capped Tube  
6 inches out of the ground, plumb and solid.

☒ left monument as found ☐ lowered monument  
☐ removed monument (explain) ☐ raised monument

☐ On \_\_\_\_\_, set a(n): \_\_\_\_\_

See "Statement of Evidence" for further details (on back)

Office of the County Recorder  
St. Louis County, Minnesota

Recorded on 10/25/2013  
at 11:09AM

Document No. 01226254

Mark A. Monacelli  
County Recorder

By Brenda Goodreau, Deputy

AFR 329007

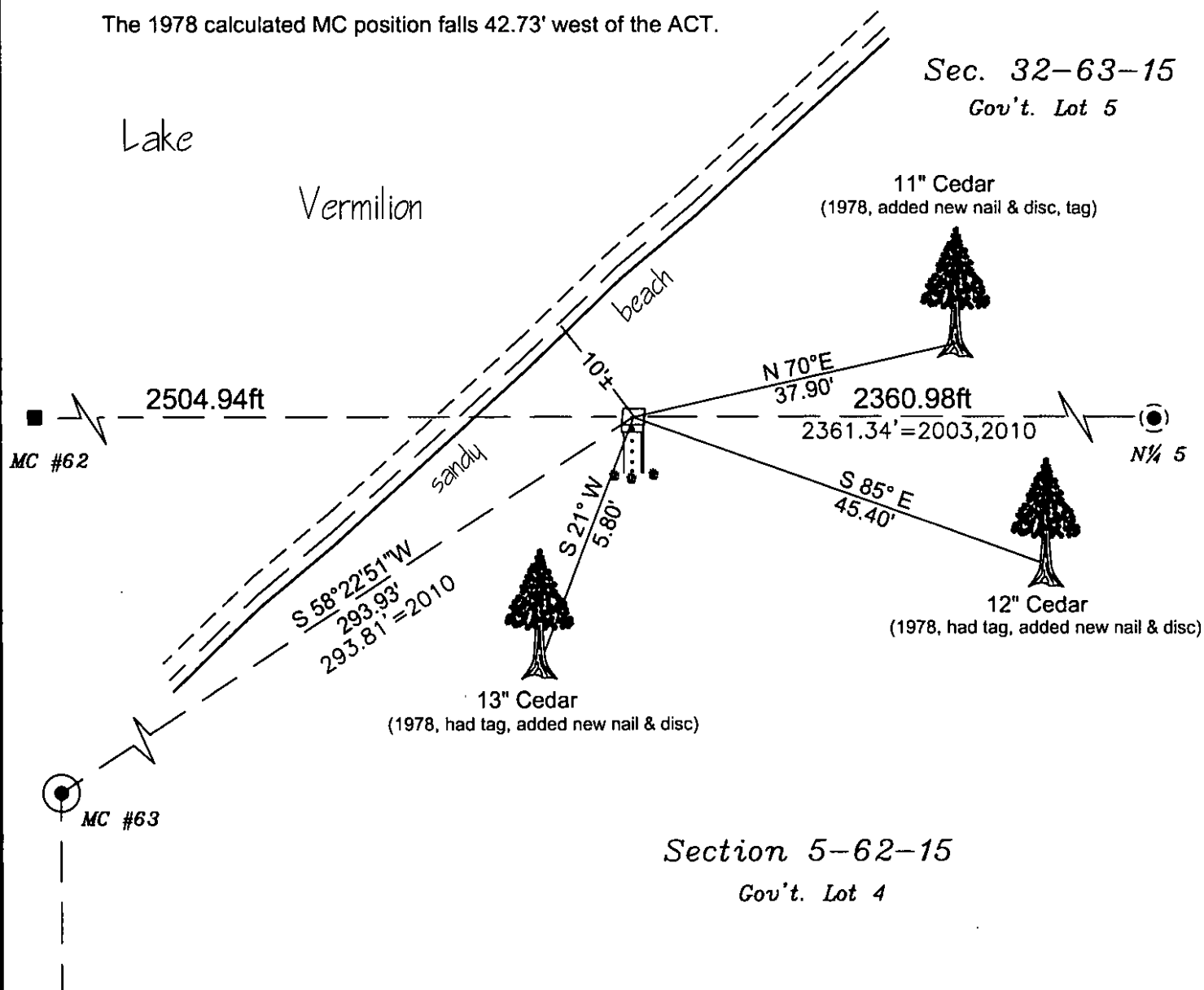


DO NOT REMOVE

(RESERVED FOR RECORDING DATA)

GPS I.D.: RTKVRS Co. Proj. No.: 145346

The 1978 calculated MC position falls 42.73' west of the ACT.



drawn by: Jake

## "SKETCH OF REFERENCE TIES"

(not to scale - bearings are magnetic)

Ties are measured to center of monument  
unless otherwise noted.

UNITS = ☐ Metric ☒ English

(NAD 83) Latitude (N): 47°53'17.39852"  
Longitude (W): 92°17'09.33317"

SLCTM 96 Northing: 3744675.760'  
(NAD 83) Easting: 4797467.726'

S. P. North Northing: \_\_\_\_\_  
(NAD 83) Easting: \_\_\_\_\_

I hereby certify that this document and the data contained herein  
was prepared by me or under my direct supervision.

Thomas J. O'Reilly  
signature

10/18/2013  
date

License No. 12671

☒ County Surveyor ☐ Deputy County Surveyor ☐ County Engineer ☐ Land Surveyor ☐ Professional Engineer

Statement of Evidence**Witness Corner to the Meander Corner #64, Section 5, T62N-R15W****June 1880**

Original survey of the north exterior of 62-15 was run east on true line between Sections 5 & 32, and at 4.00 chains (264.0') from the NW Cor. Sec. 5 (in lake) leave the bay and intersect the shoreline. A 5' long post was set 2' in the ground for the Meander Corner to Sections 5 & 32 from which:

5" Aspen	N 15°E	12 links (7.9')
4" Aspen	S 33°W	35 links (23.1')

George R. Stuntz  
U.S. Deputy Surveyor

**March 21, 1978**

Corner Card states that the original MC position was determined from running the original meanders. Since this said position falls in the lake, an Aluminum Capped Tube (ACT) was set for a WCMC 42.73' east of the true MC position. The following new ties were set:

6" Cedar	N 60°30' E	37.90'
7" Cedar	S 85°E	45.40'
7" Cedar	S 21°W	5.80'

Norm Livgard  
St. Louis Co. Surveyor's Office

**1990**

A survey done by the MN DNR primarily in Section 6 shows a "Capped Square Iron Monument" found for the WCMC. No distances to adjacent corners are shown.

Lowell Pommerening  
LS #17005

**January 2003**

A Certificate of Survey done in Gov't. Lots 1 & 2 of Section 5 shows a "found Aluminum Capped Square Tube" for the WCMC, with distances of 2361.34' east to the N¼ Cor. Sec. 5, and 3426.18' east to WCMC #65.

Northern Lights Surveying & Mapping  
LS #16089

**August 2010**

A Certificate of Survey done in Gov't. Lot 4 of Section 5 also shows a "found Aluminum Capped Square Tube" for the WCMC, with distances of 2361.34' east to the N¼ Cor. Sec. 5, and 293.81' at a bearing of S 57°53'40" W to MC #63.

Northern Lights Surveying & Mapping  
LS #46557

**April 03, 2013**

Found the Aluminum Capped Tube (ACT) for the corner protruding 6" out of the ground, plumb and solid. Directly occupied it with GPS-RTK (VRS method, Pt. #76, T62N-R15W.job) for precise Latitude & Longitude (see front). Found the three ties from 1978 as follows:

11" Cedar	N 70°E	37.90' (added new nail & disc, tag)
12" Cedar	S 85°E	45.40' (had tag, added new nail & disc)
13" Cedar	S 21°W	5.80' (had tag, added new nail & disc)

Accepted the ACT for the WCMC. It has been in place since 1978 and there was no other evidence found to dispute it. Added no new ties. The sandy beach shoreline falls 10'± NW of the corner. The true MC position falls 42.73' to the west. Distances calculated to adjacent corners are 2504.94' west to MC #62, and 2360.98' east to the N¼ Cor. Sec. 5. Also a bearing and distance of S 58°22'51" W @ 293.93' is calculated to MC #63.

Project #145346  
Bruce Anderson, Greg Jacobson  
St. Louis Co. Public works Dept./ Land Survey Division  
Tom O'Malley, County Surveyor