

Return to
SLC Surveyor
AFR #: 218723
Cash No Chg

Index No. A-9

CERTIFICATE OF LOCATION OF GOVERNMENT CORNER

Northwest Corner of Section 4
Township 57 N, Range 20 W, 4th P.M.
STATE OF MINNESOTA, COUNTY OF ST. LOUIS.

Office of the County Recorder
St. Louis County, Minnesota
Recorded on 01/11/2008
at 12:18PM

Document No. 01071684

Mark A. Monacelli
County Recorder

By Beth Talbot, Deputy

AFR 218723



DO NOT REMOVE

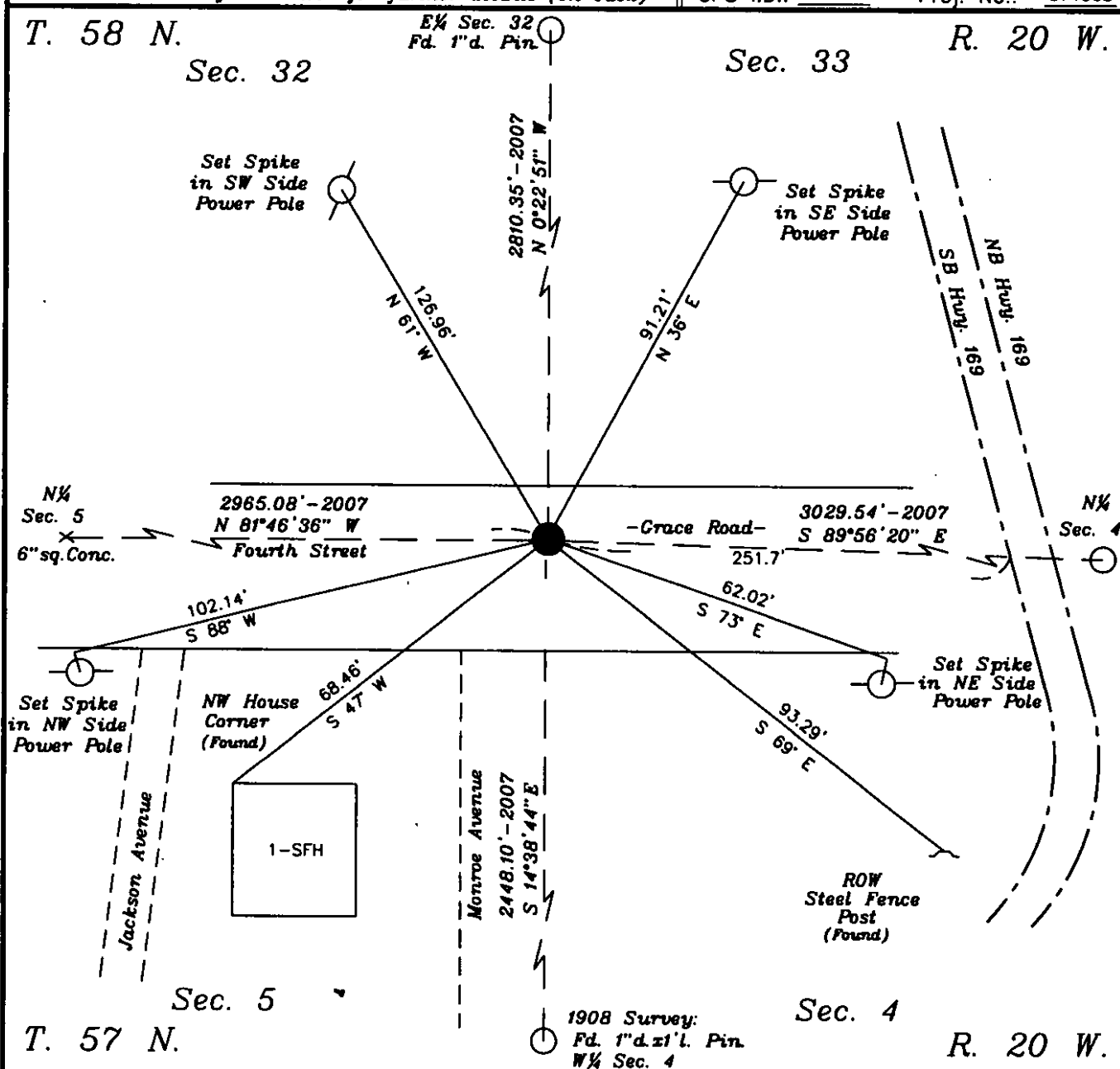
On Aug. 14, 2007, found a(n): 5/8" diameter Rebar
Monument in place for corner 5" below road surface
on center of blacktop road running east and west.

- ☐ left monument as found ☐ lowered monument
☒ removed monument (explain) ☐ raised monument

On Aug. 14, 2007, set a(n): 1" diameter x 6' long
Monument for corner 5" below blacktop road surface.
Located house tie of record. No other monuments.

See "Statement of Evidence" for further details (on back)

GPS I.D.: Proj. No.: 071068



drawn by: AAL

"SKETCH OF REFERENCE TIES"

(not to scale - bearings are magnetic)

Ties are measured to center of monument
unless otherwise noted.

UNITS = ☐ Metric ☒ English

NAD 83 Latitude (N):
Longitude (W):

SLCTM 96 Northing: 3586446.27
Easting: 4647036.56

NAD 83 S.P. Northing:
Easting:

I hereby certify that this document and the data contained herein
was prepared by me or under my direct supervision.

Anthony A. Lucchese
signature

12/17/2007
date

License No. 24587

☐ County Surveyor ☐ Deputy County Surveyor ☐ County Engineer ☒ Land Surveyor ☐ Professional Engineer

Northwest Corner of Section 4, T. 57 N. R. 20 W. 4th P.M.

July 8, 1875: General Land Office Survey
 North line of Township run by E.W. Griffin, U.S. Deputy Surveyor, Contract July 8, 1875. A Post (not described) Corner was set for Sections 5, T. 57 N. and 32, T. 58 N. from which bear:

10" Tamarack	N 51° E	19 links (12.5')
20" White Pine	S 50° E	10 links (6.6')
16" White Pine	S 66° W	71 links (46.9')
20" White Pine	N 34° W	12 links (7.9')

Enter a spruce and tamarack swamp 14 chains (924') east that bears N-S. Enter a swamp 9.60 chains (633.6') south.

St. Louis Co.-Surveyors Office
 F.B. No. 209, pp. 6, 7, 19.

December 6, 1893: Duluth, Missabe, and Northern Railway

Transfer of property for railroad right of way in the NW¼ of the SW¼ of Section 4 from the State of Minnesota to the Duluth, Missabe, and Northern Railway Company. Right of way is 50' in width on each side of centerline of the main tracks; wider where necessary for snow drifts, but not exceeding 100' in addition.

St. Louis County Recorders Office.
 Deeds Book No. 94

January 31, 1903: Great Northern Railway

Transfer of property for railroad right of way in the NW¼ of the SW¼ of Section 4 from the State of Minnesota to the Eastern Railway Company 100' wide, 50' each side of centerline known as the line from Kelly Lake to Exmore (Virginia).

St. Louis County Recorders Office
 Deeds Book 199, page 181.

Dec. 3, 1903:

Fairchild Survey Notes; typewritten set of survey notes from 1900 to 1905. Random survey came north 35.99chains from the East Corner of Section 5. Deflection Angle left 88°53' 8.648 chains to the Section Corner. True line =2454.26'.

Fairchild Notes: E. Tracy, Transitman, etc. Book No. 1, p. 5.
 St. Louis Co.-Surveyors Office

December 13 to 24, 1906:

Subdivision survey to cut out the NE¼ of NE ¼ in Section 5 by Ayres and Krelwitz. The Northeast corner of Section 5 monument is not identified. A southwest quadrant angle of 112°50' is shown at the Section Corner. The east line of the NE¼ is 2450.08'; and the north line of the NE¼ is 2964.24'.

St. Louis Co.-Surveyors Office
 F.B. No. 93, p. 99

Febr., 1908:

A sketch of a subdivision of the NE¼ of Section 5 by F. Downing and W. Rose; (who worked for E. Longyear in 1902). Survey labels a 1" Iron Pin for the Northeast corner of Section 5. A southwest quadrant angle of 112°52' is shown. The north line of the NE¼ is 2968' long by stadia. The east half of the north line of the NE¼ is 1484' long. A 1" iron pipe is 542' west of the section corner. No BT references on subdivision sketch.

St. Louis County Surveyor's Office
FB#737, pp. 6 Virginia Office

June 4, 1914:

A random survey line along the north line of Section 4. Survey ran along the road to the Grace Mine. Probable corner called out 109.6' south of random line. A northwest quadrant angle of 89°22' shown from road north to Chisholm westerly along a street in Kitzville.

St. Louis County Surveyor's Office
D.M. & N. Ry. F.B. No 542, p. 34.

1918 era:

Section 4, T. 57 N. R. 20 W. Subdivision Map on file as "X-M-458". The Northwest Corner monument is not described. A southeast quadrant angle is 75°18'; with a distance of 3031.3' to the North Quarter corner; and a distance of 2448.9' to the West Quarter corner.

St. Louis County Surveyors Office
"X" file: "X-M-458"

November 20, 1919:

Survey for State Road No. 35 (S.T.H. No. 169), Division I. The Northwest corner of Section 4 is an Iron Pipe. Tie sheet:

Stump (not described)	Northeast	30.3'
Pole	Southeast	22.4'

Corner is 237.21' westerly of road centerline. A southeast quadrant angle of 75°18' is shown. A distance of 3032' shown to the N¼ corner of Section 4.

MnDOT Highway Department
Duluth Office.

November 14, 1931:

A "Joint Survey" by the State of Minnesota, Village of Hibbing, Interstate Iron Company, Oliver Iron Mining Company, Meriden Iron Company, Snyder Mining Company, and Pickands Mather Company show a subdivision of Section 5. The Northeast Corner is a concrete monument. A southwest quadrant angle of 112°50'52" with a distance of 2965.88' to the North Quarter Corner of Section 5; and a distance of 2447.95' to the East Quarter of Section 5.

St. Louis County Surveyors Office
Miscellaneous File.

July 15, 1938:

Oliver Iron Mining Section Subdivision map in Section 4. The Northwest corner of Section 4 is a concrete monument. A southeast quadrant angle of $75^{\circ}17'45''$. The distance to the North Quarter corner is 3029.97'; and the distance to the West Quarter corner of Section 4 is 2447.95'. Corner tie sheet:

El. Light Pole	Southeast	22.8'
Fence Post	Southwest	37.8'

St. Louis County Surveyor's Office
Miscellaneous File.

May 25, 1962:

Land Corner ties from S.P. 6934-38; T.H. No.169. Northwest Corner of Section 4. Monument not identified. Tie sheet:

Triple finishing		
Nails in P.P.	Southeast	22.8'
NW concrete corner		
Of House foundation:	Southwest	68.86'
N&D in concrete		
Road centerline:	Westerly	75.55'
Telephone Pole	Northwest	61.0'

Right of way Map notes "Iron Pin" in place. A southeast quadrant angle of $75^{\circ}17'45''$. A distance of 2447.90' is shown to the West Quarter corner of Section 4. The corner is 250.0' westerly of Highway No. 169 centerline.

MnDot Highway Notes
Duluth Office.

March 8, 2004:

Found a 1" d. pin in 6" square concrete monument northeast of Pillsbury Mine railroad spur. No corner ties were established.

Anthony Lueck, Land Surveyor and Michael Kofstad,
Krech Ojard & Associates

August 14, 2007:

RTK GPS traverse to the Northwest corner of Section 4. No monument on road surface or corner ties found. Opened 1½' diameter hole in pavement. Found a 5/8" Rebar, 1½' long in place for corner monument. Removed rebar and excavated hole to depth of 5'±. No additional monuments were found. Set a 1" d. x 5½' long steel pin in place of found rebar. Found 1962 House corner tie:

NW concrete corner		
Of House foundation:	Southwest	68.46'
Established corner ties:		
Spike in Guide Pole	N 61° W	126.96'
Spike in Power Pole	N 36° E	91.21'
Spike in Power Pole	S 73° E	62.02'
R/W SFP	S 69° E	93.29'
Spike in Power Pole	S 88° W	102.14'
Gate valve Water Box	N 87° W	118.4'

Anthony Lueck, Land Surveyor.
Krech Ojard & Associates