

Office of the County Recorder

St. Louis County, Minnesota

Recorded on 01/21/2000

at 03:22PM

Document No. 00775884

Mark A. Monacelli  
County Recorder

By BETH TALBOT DEPUTY  
AFR 30999



00775884

DO NOT REMOVE

**CERTIFICATE OF LOCATION OF GOVERNMENT CORNER**

South Quarter Corner of Section 8, Township 62N, Range 17W, 4th P.M.  
STATE OF MINNESOTA, COUNTY OF ST. LOUIS.

AT THE CORNER LOCATION SHOWN ON THE SKETCH:

☒ On 09-18-1996 found a(n) Aluminum Capped Pipe

DATE

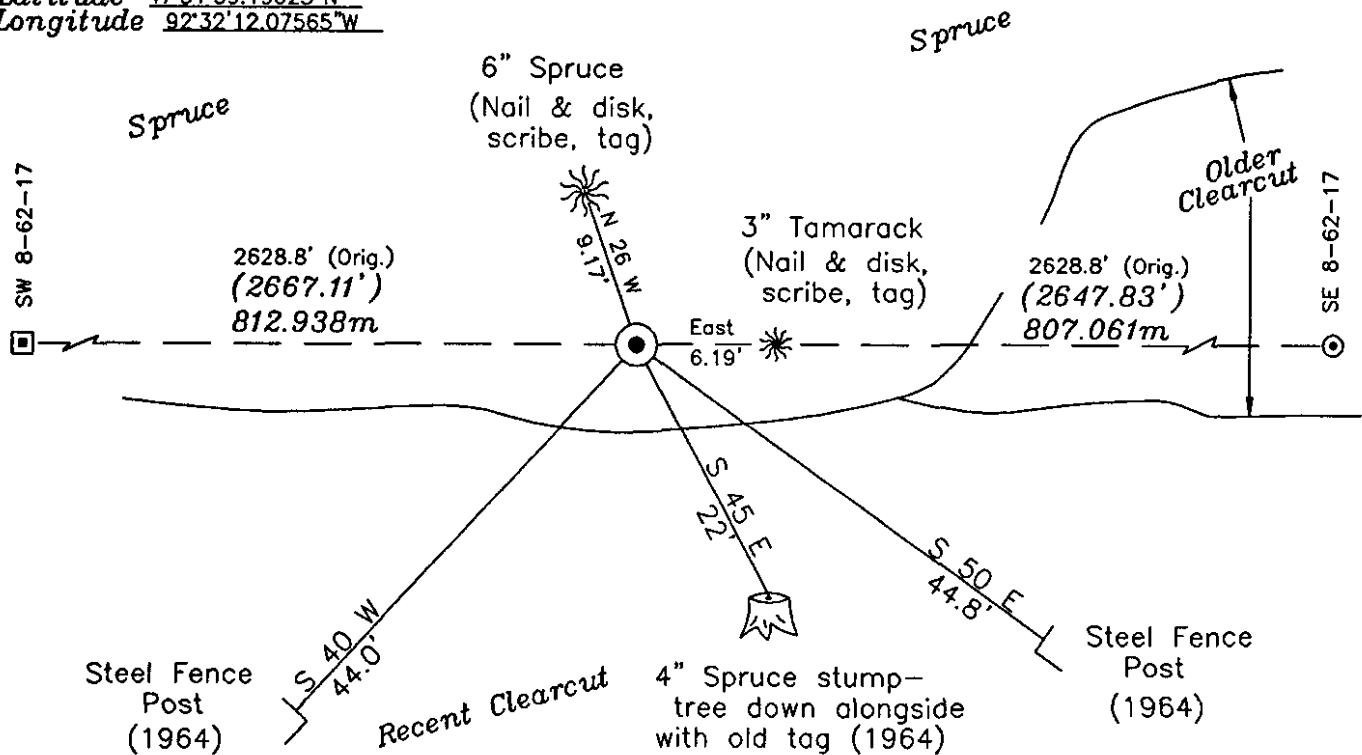
☒ left monument as found ☐ lowered monument ☐ raised monument ☐ removed monument (explain)

☐ On \_\_\_\_\_ placed a(n) \_\_\_\_\_

DATE

SLCTM96 N= 1138336.706m  
E= 1443513.232m  
State Plane N= 251447.825m  
E= 842145.806m  
Latitude 47°51'39.19023"N  
Longitude 92°32'12.07565"W

Section 8-62-17



Section 17-62-17

**"SKETCH OF REFERENCE TIES"**

(not to scale - bearings are magnetic)

UNITS = ☒ Metric ☒ EnglishB/R  
drawn by

Statement of evidence relative to this  
corner location, is on back of page.

I hereby certify that this document and the data contained herein  
was prepared by me or under my direct supervision.

Thomas J. O'Malley  
signature

12/12/1999  
date

License No. 12671

☐ County Surveyor  
☒ Deputy County Surveyor  
☐ Land Surveyor

☐ County Engineer  
☐ Professional Engineer

Office of the County Recorder

St. Louis County, Minnesota

Recorded on 01/21/2000

at 03:22PM

Document No. 00775884

Mark A. Monacelli

County Recorder

By BETH TALBOT DEPUTY  
AFR 30999

00775884

DO NOT REMOVE

- 09-29-1884 Original survey of 62-17 subdivision was run west on true line between Sections 8 & 17 and at 39.83 chains set a wood post for the corner from which:  
3" Spruce N 10° E 7 links(4.62')  
6" Tamarack S 08° W 35 links(23.1)  
Day F. Stacy, U.S. Deputy Surveyor
- 11-20-1964 The Daily Survey Report of states: "Run East from IP to 1/4 between 8/17 found 4 different squared tree cor's-Also found YT. & 1 BT". Old Corner Card(11-20-1964) indicates finding an Old State Tag(it appears that they found the State Tag to the SW - no bearing, distance, or description) and an Original BT(Bearing Tree):  
3" Spruce N 10° E 4.62'  
Set an Iron Pipe from the BT and ties:  
2" Spruce S 45° E 22'(tag)  
2" Spruce N 30° W 18'(tag)  
Al Bakk, St. Louis County Surveyors
- 11-08-1965 Old Corner Card indicates finding the Old Yellow Tag to the SW(no bearing, distance, or description) the Spruce BT, setting a Capped Iron Pipe for the corner, and setting new ties:  
Steel Fence Post(SFP) S 40 W 45'  
SFP S 50 E 45'  
Al Bakk, Wayne Nakari, Wayne Moroste  
St. Louis County Surveyors
- 03-16-1995 The document entitled "Location of Survey Monument Found" indicates finding an Aluminum Capped Pipe (ACP) for the corner and the SFP ties of record. Also found was a 5" Spruce N 30° W 10' with a location tag.  
John Muhich and Mike Stubbs  
St. Louis County Land Department

cont. page 2

S 1/4 8-62-17 (J-7) cont.

02-21-1996 Found the ACP marking the corner at the northerly' edge of a clearcut. A direct observation was then made using our GPS equipment.  
On 09-18-1996 we again found the ACP and then searched for all ties of record finding:  
4" Spruce with tag cut down S 45° E 22' to stump(1964)  
SFP S 50° E 44.8'(1965)  
SFP S 40° W 44.0'(disturbed-measured to face-1965)  
Found a Location Tag inscribed "1966-R.Hance" on a 6" Spruce which fell N 26° W from the corner. Searched for any wood post remains around the ACP, finding none. Accepted the ACP for the corner as it appears it was set from an original BT.  
Set new ties:  
6" Spruce N 26° W 9.17'(Removed 1966 tag and placed a nail & disk, scribe, and new tag)  
3" Tamarack East 6.19'(Nail & disk, scribe, tag)  
Latitude NAD83(96) = 47°51'39.19023"N  
Longitude NAD83(96) = 92°32'12.07565"W  
SLCTM96 = N:1138336.706m, E:1443513.232m  
State Plane = N:251447.825m, E:842145.806m  
John Corso, Greg Jacobson, and Randy Reed of the St. Louis County Land Survey Division/Public Works Dept.  
Tom O'Malley, Deputy County Surveyor