

Office of the County Recorder

St. Louis County, Minnesota

Recorded on 01/21/2000

at 03:22PM

Document No. 00775874

Mark A. Monacelli

County Recorder

By BETH TALBOT DEPUTY

AFR 30999



00775874

DO NOT REMOVE

**CERTIFICATE OF LOCATION OF GOVERNMENT CORNER**

Southwest Corner of Section 17, Township 62N, Range 18W, 4th P.M.  
STATE OF MINNESOTA, COUNTY OF ST. LOUIS.

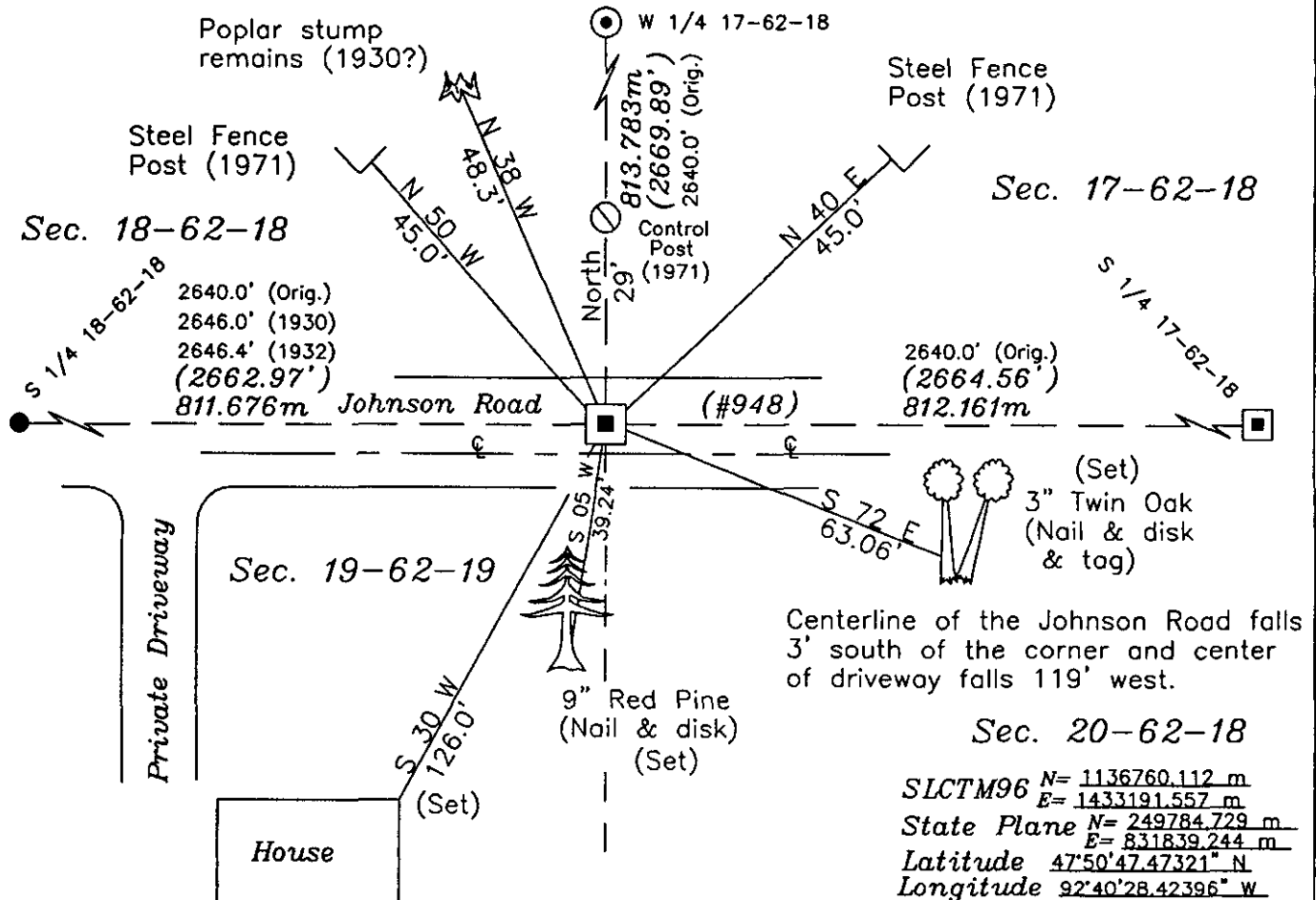
AT THE CORNER LOCATION SHOWN ON THE SKETCH:

☒ On 05-01-1996 found a(n) 5/8" Rebar

DATE

☐ left monument as found ☐ lowered monument ☐ raised monument ☒ removed monument (explain)

☒ On 09-03-1997 placed a(n) 1' Aluminum Capped Square Tube at the found  
DATE 5/8" Rebar position.

**"SKETCH OF REFERENCE TIES"**

(not to scale - bearings are magnetic)

UNITS = ☒ Metric ☒ English

R/R  
drawn by

Statement of evidence relative to this corner location, is on back of page.

I hereby certify that this document and the data contained herein was prepared by me or under my direct supervision.

Thomas J. O'Malley  
signature

12/2/1999  
date

License No. 12671

☐ County Surveyor ☐ County Engineer  
☒ Deputy County Surveyor ☐ Professional Engineer  
☐ Land Surveyor

Office of the County Recorder  
St. Louis County, Minnesota

Recorded on 01/21/2000

at 03:22PM

Document No. 00775874

Mark A. Monacelli  
County Recorder

By BETH TALBOT DEPUTY  
AFR 30999



00775874

DO NOT REMOVE

## SW 17, T62N-R18W (N-5)

- 05-17-1896 Original survey of 62-18 subdivision was run north between Sections 19 & 20 and at 80.00 chains a wood post was set for the corner from which:  
     4" Spruce S 51° E 46 links  
     4" Fir N 28° E 43 links  
     6" Aspen S 62° W 60 links(39.6')  
     6" Aspen N 33° W 61 links(40.3')  
     Bernard Keegan, U.S. Deputy Surveyor
- 02-07-1918 JOHNSON ROAD consolidated and re-named by Resolution of County Board states: To be comprised.....at the west quarter corner of Sec. 22, Twp. 62, R. 18, thence running west one mile, thence north one-half mile, thence west to about the east sixteenth corner on the north line of Sec. 19, Twp. 62, R. 18.....
- 06-30-1919 A DWP RR track map indicates the corner (monument type not mentioned) 1372.0' east of the intersection of the east-west road with the RR track.
- 05-05-1930 Field notes indicate that no corner was found but shows Bearing Trees (B.T.'s):  
     6" Poplar S 62° W 47.5'  
     6" Poplar N 33° W 48.3'  
     Notes show a distance of 2646.0' to the S 1/4 Corner of Section 18.  
     Minnesota Dept. of Transportation
- 10-31-1932 Old Highway Dept. Volume of Townships indicates an Iron Pipe symbol for the corner and shows a distance of 2646.4' to the S 1/4 Corner of Section 18.  
     St. Louis County Highway Dept.
- 11-12-1971 Old Corner Card indicates finding a 5' long x 1 1/2" Iron Pipe with a driving cap with a cross on top, 3' north of centerline of the road. The Iron Pipe was removed and replaced with an Aluminum Capped Pipe (ACP), 2" below the road surface. Set ties:  
     Steel Fence Post (SFP) N 50° W 45'  
     SFP N 40° E 45'  
     Set a Control Post 30' North.  
     Al Bakk, Wayne Nakari, Wayne Moroste  
     St. Louis County Surveyors

cont. page 2

SW 17-62-18 (N-5) cont.

05-01-1996 Found a 5/8" Rebar marking the corner. A direct observation was then performed with our GPS equipment. On 07-22-1997 we measured a distance of 1366.4' from the corner to the intersection of centerlines of the DWP RR Track and the Johnson Road. On 09-03-1997 found a Control Post(1971) 29' north and ties:

SFP N 50° W 45.0'(1971)

SFP N 40° E 45.0'(1971)

Searched for all other ties of record and found:

Poplar stump remains N 38° W 48.3'(possible 1930 tie)

We then excavated 2.5'x 2.5'x 2' deep alongside the 5/8" Rebar, which was 2' long, and found:

A 3" wide piece of lathe

A 4" long 1/2" Rebar

A 5" long 1/2" Rebar

We removed all monuments and excavated deeper finding wood post remains. An analysis of the field evidence, record data, and today's survey measurements indicates that the obliterated location of the government corner is at the found 5/8" Rebar position. Therefore, we set a 1' Aluminum Capped Square Tube 4" below the road surface at the found 5/8" Rebar position to mark the location of the government corner. Set new ties:

9" Red Pine S 05° W 39.24'(Nail & disk)

3" Twin Oak S 72° E 63.06'(Nail & disk & tag)

NE corner of house S 30° W 126.0'

Johnson Road centerline falls 3' south of the corner. Center of a private driveway falls 119' to the west. The Red Pine tie is at the easterly edge of a lawn.

Latitude NAD83(96) = 47°50'47.47321"N

Longitude NAD83(96) = 92°40'28.42396"W

SLCTM96 = N:1136760.112m, E:1433191.557m

State Plane = N:249784.729m, E:831839.244m

Randy Reed, Bruce Anderson, and John Corso of the St.

Louis County Land Survey Division/Public Works Dept.

Tom O'Malley, Deputy County Surveyor