

CERTIFICATE OF LOCATION OF GOVERNMENT CORNER

Southwest (closing) Corner of Section 18, Township 62N, Range 18W, 4th P.M.
STATE OF MINNESOTA, COUNTY OF ST. LOUIS.

AT THE CORNER LOCATION SHOWN ON THE SKETCH:

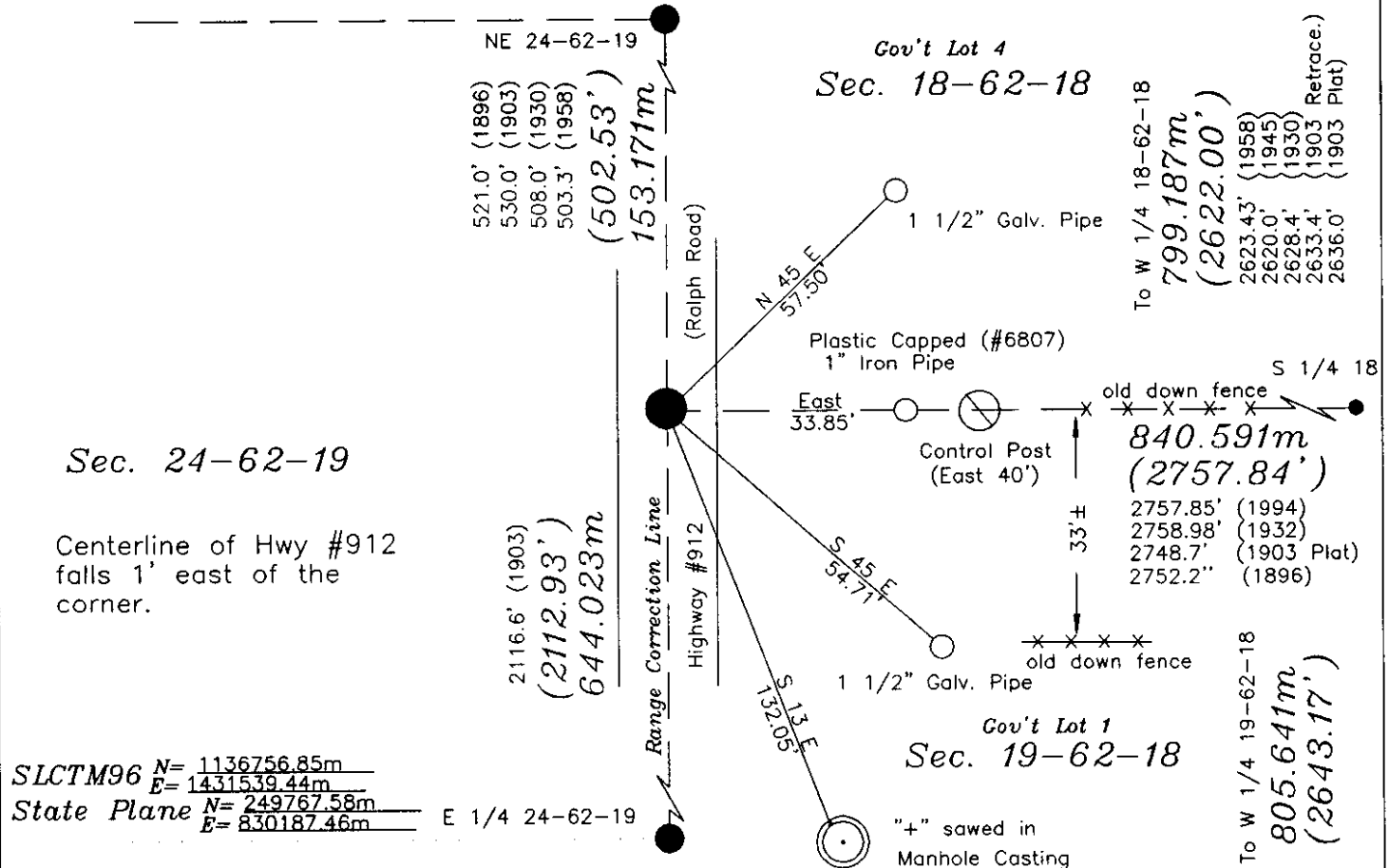
☒ On 05-23-1996 found a(n) Plastic Capped 1" Iron Bar

DATE

☐ left monument as found ☐ lowered monument ☐ raised monument ☒ removed monument (explain)

☒ On 07-08-1998 placed a(n) Cast Iron Monument at the found Iron Bar position

DATE

**"SKETCH OF REFERENCE TIES"**

(not to scale - bearings are magnetic)

UNITS = ☒ Metric ☒ EnglishRJR
drawn by

Statement of evidence relative to this
corner location, is on back of page.

I hereby certify that this document and the data contained herein
was prepared by me or under my direct supervision.

Thomas J. O'Malley
signature

Jan. 29, 1999
date

License No. 12671

☐ County Surveyor

☒ Deputy County Surveyor

☐ Land Surveyor

☐ County Engineer

☐ Professional Engineer

ST. LOUIS COUNTY RECORDER
STATE OF MINNESOTA
I HEREBY CERTIFY THAT
THE WITHIN INSTRUMENT
WAS FILED IN THIS OFFICE
FOR RECORD AS

DOCUMENT NO. 00744993

ON 02/25/1999
AT 12:44PM

MARK A. MONACELLI
COUNTY RECORDER

BY BETH TALBOT DEPUTY
F2599088

- 07-01-1882 Original survey of the Range Line between 62-18 & 62-19 was run north between Sections 19-62-18 and 24-62-19 and at 80.00 chains set a wood post, 5' long, 4" square, 2' in ground for the corner to Sections 13, 18, 19 & 24 from which:
- 3" Aspen N 29° E 11 links
 - 3" Tamarack S 53° E 42 links
 - 8" Aspen S 56° W 68 links
 - 8" Aspen N 75° W 65 links
- George R. Stuntz, U.S. Deputy Surveyor
- 05-10-1896 Original survey of 62-18 subdivision was run and during this survey I find the west line of Township to be out of alignment and "Erroneous measurement." A Resurvey was run north on true line from the SW corner of 62-18 (after running 6 miles & 150 links and intersecting the north boundary of Township 5.90 chains east of the old Township corner) and on running the east boundary of Section 24-62-19, at 80.00 chains set a spruce post for corner to Sections 13 & 24-62-19 with ties. Found the old section corner N 63 W, 6.70 chains which I destroy all traces of. Seven days later, on 5-17-1896, I run west on true line between Sections 18 & 19 and at 81.70 chains intersect west boundary of Township 7.90 chains south of SE Cor. Sec. 13-62-19 and set a Tamarack post for the Closing Corner to Sections 18 & 19-62-19 from which:
- 6" Aspen N 40° E 8 links
 - 7" Aspen S 70° E 25 links
- Bernard Keegan, U.S. Deputy Surveyor
- 07-1903 Old Surveyor's Volume # 13 and County Field Book #92, pages 40 & 41, a survey for the Ashawa Plat, indicates finding old Gov't. corner and BT's (Bearing Trees). Notes show a distance of 2636' to the W 1/4 Corner Section 18 (set lost) and a distance of 2748.7' to the S 1/4 Corner Section 18 which was found.
- James Conroy, Surveyor
- 08-24-1903 Original survey of 62-19 was run and during this survey a Retracement of the Range Line between 62-18 & 62-19 was run north between Sections 19-62-18 and 24-62-19 and at 72.13 chains, fall 5 links west of Closing Corner to Sections 18 & 19, 62-18. Thence continue north from Closing Corner and at 80.16 chains intersect corner to Sections 13 & 24, 62-19.
- Charles H. Armstrong, U.S. Deputy Surveyor
- 02-07-1918 "RALPH ROAD" Consolidated and Re-named by Resolution of County Board states: "Beginning at or near the West Quarter Corner of Section 18, Township 59, Range 18; thence north on Range line to the Southeast Corner of Section 13, Township 62, Range 19."

SW 18-62-18 (N-1) cont.

- 05-05-1930 Hwy. #53 road alignment notes state the SW Cor. Sec. 18-62-18 to be at C/L of County Road #73 and C/L of a cleared 66' wide R.O.W. to the east with a fence line on the S. side of the R.O.W. (33') Also shown are distances of 508.0' to the SE Cor. Sec. 13-62-19 and 2628.4' to the W 1/4 Cor. Sec. 18-62-18. No ties or type of monument are shown.
MnDOT, Duluth Office - SP 6920
- 10-31-1932 A drawing of Section 18-62-18 found in the Old Highway Department-Township Volume shows a distance of 2758.98' from the SW Corner of Section 18 to the S 1/4 Corner of Section 18. Also shown is a distance of 2492.0' to the intersection of State Road #11 (Hwy #53) with the Wein Road (Ralph Road).
St. Louis County Surveyor's Office
- 11-1945 Plat of "Lantz Add. to Cook" located in Gov't. Lot 3 of Sec. 18-62-18 shows the W 1/4 Cor. Sec. 18 and the W 1/16 of SW 1/4 in place as Iron Pipes with a distance of 1310.0' between them. This assumes the SW Cor. Sec. 18 was also in place with an assumed distance of 2620.0' to the W 1/4 Cor. Sec. 18.
E.F. Johnson, Engineer
- 02-19-1958 Notes state the SW Cor. Sec. 18-62-18 to be at C/L of road with 4 ties: R.P. Pipes NE, NW, SE & SW at 46.7' Distances of 503.3' to the SE Cor. Sec. 13-62-19 and 2623.43' to the W 1/4 Cor. Sec. 18-62-18 are noted.
Ely Engineer's Office
- 10-07-1965 Old Corner Card indicates finding a spike in C/L (centerline) of road for Corner and ties:
Iron Pipe N 45° W 46.10'
Iron Pipe S 45° W 47.2'
Iron Pipe S 45° E 47'
Set new ties:
SFP(Steel Fence Post) S 50° E 45'
SFP N 40° E 45'
Set a Control Post 30' east. Chained south 5287' to the SW Cor. of Sec. 19-62-18.
St. Louis County Surveyor's Office
- 08-01-1990 Found a 1" Iron Bar with a Plastic Cap 1" below the road surface. County steel fence posts were found disturbed, lying 6"-8" below the surface. Set new ties:
6' SFP N 65° E 33.38'
6' SFP S 56° E 35.00'
Kenneth Stauppe, United States Forest Service(U.S.F.S.)
(See Corner Certificate - Document #0538512)

cont. page 3

Statement of Evidence:

SW 18-62-18 (N-1) cont.

00744993

08-1994 A partial subdivision of Section 18 shows distances from the SW Cor. of Sec. 18; 2757.85' to the S 1/4 Cor. of Sec. 18 and 2622.54' to the W 1/4 Cor. of Sec. 18.
Russ Barke, RLS #6336

05-23-1996 Found a Plastic Capped 1" Iron Bar for the possible corner on centerline of Highway #912. Searched for all ties of record and found:

1" Drill Rod N 45° W 46.20'
1" Drill Rod S 45° W 46.20'
1" Drill Rod S 45° E 46.7' (disturbed)
SFP N 45° E 45.0' (disturbed)
Plastic Capped(#6807) 1" Iron Pipe East 33.85'
SFP N 65° E 33.34' (1990-U.S.F.S.)
SFP S 58° E 34.99' (1990-U.S.F.S.)

We chained a distance of 133'± from the W 1/4 Corner of Section 18 to the intersection of Hwy #53 with the Ralph Road which when subtracted from 2621.99' (SW 18 to W 1/4 18 today) is 2489.0' as compared to 2492.0' in 1932.

Set a new tie:

"+" sawed in Manhole Casting S 13° E 132.05'

Found old down fencelines; one was in line with and running east of the corner, the other was 33'± south and running east, as called for in the 1930 entry.

On 07-15-1996 we excavated 3'x 6'x 3.5' deep below the corner in search of any other monuments. None were found.

The survey distances from 1903 (for the plat of Ashawa) suggest that the corner is about 14 feet south and 9 feet east from the 1" iron bar found in 1996. So on 07-08-1998, we excavated 5'x 6'x 4' deep at the location suggested by the Ashawa notes but found no evidence of the corner. A review of all the records for this corner reveals some inconsistent measurements to this corner. However, our measurements to the 1" iron bar found in 1996 are reasonably consistent with records dating back to 1932 and since no other evidence of the corner was found, we accepted it as the best evidence of the corner. A Cast Iron Monument was then set from the following ties:

"+" sawed in Manhole Casting S 13° E 132.05'

Plastic Capped(#6807) 1" Iron Pipe East 33.85'

The 3 Drill Rod ties and the 3 SFP ties were all removed during construction. Added new ties:

1 1/2" Galvanized Pipe - 6' long N 45° E 57.50'

1 1/2" Galvanized Pipe - 6' long S 45° E 54.71'

Set a Control Post East at 40' with a location tag. Centerline of Highway #912 falls 1' east of the corner.

SLCTM96 = N:1136756.85m, E:1431539.44m

State Plane = N:249767.58m, E:830187.46m

Dave Tech, John Corso (1996), Greg Jacobson, and Randy Reed of the St. Louis County Land Survey
Division/Public Works Department
Tom O'Malley, Deputy County Surveyor